

YOUNG PEOPLE AND FAMILIES



Millwall Park  
playground open

SEE PAGES 8-9

JOBS AND ECONOMY



Shop local this  
Christmas

SEE PAGES 18-19

COMPETITION



Win cinema and  
ice rink tickets

SEE PAGE 46

ISSUE TWENTY-THREE // DECEMBER 2021



# OU REASTEND



## Alex unwraps her past

Alex Scott explores her East End heritage – see pages 12-13

Photo: BBC/Wallo Wall Media Ltd/Stephen Perry

# Are you a private Landlord? Agent? Tenant?

**If so, you need to know  
about the three privately  
rented property licensing  
schemes in Tower Hamlets.**

## Selective Licensing

APPLIES TO

All rented properties in Whitechapel, Spitalfields, Weavers or Banglatown areas of the borough.

## Additional Licensing

APPLIES TO

All rented properties anywhere in the borough which are occupied by three or more people living as two or more separate households who share facilities.

## Mandatory Licensing

APPLIES TO

All rented properties anywhere in the borough which are occupied by five or more people living as two or more separate households who share facilities.

## Landlords

Failure to licence a licensable property can lead to a criminal conviction and unlimited fine, or a £30,000 Financial Penalty. You may also not be able to legally evict your tenants.

## Tenants

If you are living in an unlicensed property you can apply for a rent repayment order and get up to 12 months rent back. You can check if your property is licensed by looking at the public register on our website.

For further information and to submit an application visit:

[www.towerhamlets.gov.uk/licensingschemes](http://www.towerhamlets.gov.uk/licensingschemes)

or email [housinglicensing@towerhamlets.gov.uk](mailto:housinglicensing@towerhamlets.gov.uk)

# OUR EAST END

## NEWS FROM TOWER HAMLETS COUNCIL AND YOUR COMMUNITY

As 2021 draws to a close I've been reflecting on a year full of challenges but one with lots of positives too.

Covid-19 continues to be a big concern, but the rollout of vaccinations and boosters means we are in a stronger position than we were this time last year. However, we must continue to be vigilant and follow precautions, and there remains a constant risk of new variants. The world has changed but we are returning carefully towards a new 'normal' and getting on with our lives.

Tower Hamlets is well known for its community spirit and standing together in the face of adversity, and I have been incredibly moved by the way that people have stuck together throughout these difficult times.

In October we organised a series of events across Tower Hamlets paying tribute to those who have died of Covid-19 and celebrating the way our community has rallied together. We also came together to thank our amazing volunteers at a community event.

Alongside our Covid response we have been keeping our services going, and working to serve you all. I would like to thank our staff and other public servants in our community.

Another personal highlight of the year has been our programme of events to mark the 50th anniversary of Bangladesh's independence. Bangladesh is of course very important to us in Tower Hamlets, and our Bangladesh@50 programme has given residents, visitors and others the opportunity to enjoy some of the best of Bengali arts, music and culture.

We've had 265 days of events taking us through to 16th December 2021, otherwise known as Victory Day, when independence was finally achieved. This has been an incredible celebration and I hope you've managed to take part in some of it throughout the year.

Another key moment of the year has been the council and its partners setting out our plans to become a net zero carbon council by 2025, and a net zero carbon borough by 2045. This work is so important, and will continue to be a major focus for us next year and in the years that follow.

Finally, I'd like to wish you and your families a very Merry Christmas and a happy and healthy New Year.

As ever, you can get in touch with me by emailing [mayor@towerhamlets.gov.uk](mailto:mayor@towerhamlets.gov.uk) or calling 020 7364 4000.

**John Biggs,**  
Mayor of Tower Hamlets



### 4-5// Housing

Barchester Street homes celebrated, action against rogue landlords, new Intermediate Housing Register.

### 6// Community news

Tributes paid to Covid-19 frontline workers and loved ones lost.

### 7// Council news

A new history for Whitechapel, government U-turn on Westferry Printworks, drug dealers raided, Spitalfields referendums results.

### 8-9// Young people and families

New Millwall Park playground, new young mayor and deputies.

### 12-13// History

Alex Scott explores her East End heritage.

### 14-15// Clean & green

Communities come together for a cleaner Tower Hamlets, recycle this Christmas, plans for net zero carbon borough by 2045.

### 17// Community news

Inspirational five awarded Freedom of the Borough, Victoria Park is the people's choice once again, new campaign to celebrate Tower Hamlets, £1.5m pledged to tackle inequality.

### 18-19// Jobs & economy

Shop local, job success at construction fair, Kickstart placements.

### 20-21// Healthier lives

Staying safe this winter.



### 23// Mayor's Covid Recovery Fund

Bollywood dancing, pie and mash and a lot of laughs at fun day, half million boost for business as grants launched.

### 24-26// Walk with Graham Barker

Changing places: Wood Wharf.

### 28// Liveable Streets

Next steps on Liveable Streets.

### 30-31// Safer Together

Getting serious about tackling laughing gas, borough's partnership column.

### 34-35// Celebrating our borough

Exploring the Museum of London Docklands.



### 37-38// Arts & events

Bangladesh@50 'Victory Day' celebrations planned, what's on.

### 41// Council news

Have your say in consultations.

### 42-43// Harmony

Council news in Bengali and Somali.

### 44-45// Know your council

Contact details for the mayor and councillors.

### 46-47// Useful information

Council news, meeting dates and how to get in touch.

Our East End is produced by: Tower Hamlets Council

Editorial enquiries: 020 7364 4389

Email: [communications@towerhamlets.gov.uk](mailto:communications@towerhamlets.gov.uk)

Advertising enquiries: 020 7364 6005

Printed by: Reach Printing Services

Distributed by: London Letterbox Marketing

## Sign-up to Tower Hamlets news

Find out what's on, get Tower Hamlets news, take part in competitions and receive local offers straight into your inbox!

Visit [www.towerhamlets.gov.uk/signup](http://www.towerhamlets.gov.uk/signup)



Facebook  
[/Towerhamletscouncil](https://www.facebook.com/Towerhamletscouncil)



Twitter  
[@TowerHamletsNow](https://twitter.com/TowerHamletsNow)



Instagram  
[@TowerHamletsNow](https://www.instagram.com/TowerHamletsNow)



Residents celebrate their new neighbourhood – a scheme in which 115 new council homes have been delivered

# New Barchester Street homes celebrated by the community

## HOUSING

Face painting, a bouncy castle and free cake were some of the attractions on offer at a community day in Poplar to celebrate the official opening of more than a hundred new council homes.

Residents of the Barchester Street development came together for the event organised by Tower Hamlets Homes to celebrate their new neighbourhood – a scheme in which 115 new council homes have been delivered, including ten homes specifically designed for wheelchair users.

“I was living in a tower block on the 23rd floor, with lots of stairs internally, with my four children

and my husband,” said new resident Sameera Khan, who recently moved with her family into one of the new homes from the Isle of Dogs.

“I am newly disabled and the old property wasn’t suitable for my needs. I had to permanently lay in the living room in a hospital bed and wasn’t able to walk at all so didn’t have access to the bathroom or toilet either.”

After alerting the council to the suitability of her home in the Isle of Dogs and now having a medical priority, Sameera was offered a suitable new council home in one of the new flats within the Barchester development.

“Honestly Tower Hamlets were amazing and understanding and

really supported us,” Sameera said.

Bringing further regeneration to this part of the borough, the new homes also provide much needed green space for the community, which allows many to come together in the secure central courtyard and communal gardens.

“I have a lovely balcony so on days when I’m unable to physically go out, I can sit on the balcony in my wheelchair and see my children

playing safely in the communal area downstairs,” Sameera said.

“It has completely changed my life for the better, I am now able to move around my whole home in my wheelchair and do the things I used to do like put my children to bed.”

For more information on housing in Tower Hamlets, visit [www.towerhamlets.gov.uk/housing](http://www.towerhamlets.gov.uk/housing)

**“It has completely changed my life for the better, I am now able to move around my whole home in my wheelchair and do the things I used to do.”**

## Action against rogue landlords in council clampdown

Fifty-seven successful prosecutions have been brought against rogue landlords and letting agents in the past three years, recent figures from the council show, as it announced a new selective licencing scheme which came in to operation in October.

Courts issued fines totalling over £361,662, of which £115,461 were handed to landlords and £225,500 to letting agents. Thirteen landlords were given a criminal caution and

12 received civil penalties totalling £76,661.

Crimes included renting out unlicensed properties, failing to carry out required improvements and charging hidden fees.

The largest single fine was £167,000, given to Sterling De Vere for giving false information to clients. The estate agent was also successfully prosecuted for two other offences under the Housing Act 2004 and fined £16,200.

The council’s Selective Licensing Scheme came into force in October for another five years, covering all rented properties within the Weavers, Whitechapel, Spitalfields and Banglatown areas. It means that all private landlords in these areas must obtain a licence and if they fail to do so, or fail to maintain acceptable management standards, the council can take action such as issuing fines.

Private tenants have also been

helped by the council to claim back more than £360,000 from rogue landlords in 2020-21. The money was recovered using rent repayment orders (RROs) which allow the council and tenants to get back up to 12 months’ rent from landlords who fail to license properties when they are required to do so.

If you have an issue with a private landlord, visit [www.towerhamlets.gov.uk/privaterenting](http://www.towerhamlets.gov.uk/privaterenting)

# New Intermediate Housing Register gives residents first selection on new homes

Residents and workers on low or average incomes in Tower Hamlets are set to benefit from a new housing register which will give them 'first dibs' on new affordable homes in the borough.

Under the new Intermediate Housing Register, launched in October, residents on low incomes will have the first chance to express interest in any new London Living Rent, Shared Ownership and other



Tower Hamlets residents will have the first chance to express interest in any new London Living Rent, Shared Ownership and other intermediate homes built in the borough



**The Intermediate Housing Register will allow a large proportion of these residents to find suitable homes and continue to provide more realistic housing options to those who need it.**

intermediate housing schemes built in Tower Hamlets.

For the first three months these homes are listed, only local people and those who have worked in the borough for at least six months who are registered will get details of the properties.

After that, if Tower Hamlets residents have not bought or rented the homes, they will become open to the general public.

Cllr Danny Hassell, Cabinet Member for Housing, said:

"There are many people on our housing register who, regrettably, have no prospect of securing a council home but have difficulty accessing the housing market.

"This particularly affects many of our young residents within Tower Hamlets who do not have the opportunity to get on to the property ladder.

"The Intermediate Housing Register will allow a large proportion of these residents to find suitable homes and continue to provide more realistic housing options to those who need it."

For more information on Tower Hamlets Intermediate Housing Register, visit [www.towerhamlets.gov.uk/IntermediateHousingRegister](http://www.towerhamlets.gov.uk/IntermediateHousingRegister)

## Work begins on phase four of new housing development



17 new residential homes at 100% affordable rent are being built on the site

Work on the fourth phase of a housing development in Limehouse which will provide 100 per cent affordable homes has officially got underway after a 'breaking ground' event in October.

The Locksley D development, which is being delivered as part of the Mayor's commitment to deliver and identify 2,000 new council homes across the borough, will

include 17 new residential homes at 100 per cent affordable rent and will form part of the wider Locksley Estate.

John Biggs, Mayor of Tower Hamlets, who attended the 'breaking ground' event at Locksley D, said:

"It was a pleasure to return to the Locksley Estate to mark the beginning of the fourth phase of this development.

"Although quite a difficult site to build on, Locksley D will continue to provide much needed 100 per cent affordable homes for families within Tower Hamlets and I look forward to the completion of the build."

The 17 new affordable rent homes will consist of five one-bedroom, six two-bedroom, four three-bedroom and two four-bedroom properties. Two of the new homes will be fully wheelchair accessible.

The wider estate will also benefit from landscape improvements including an upgrade to an existing play area.

Bouygues UK was appointed as the principal contractor in May 2018 to develop all four sites of the Locksley Estate. The Locksley D site was granted planning permission in April 2019 with Bouygues UK taking possession in October 2020.

Rob Bradley, CEO of Bouygues UK said:

"It's an honour to be here today to mark the fourth phase of this important development. We are proud to support the borough in its

commitment to build more housing and excited to build more high-quality homes for local residents in Tower Hamlets."

The build is expected to be complete in November 2022.



**We are proud to support the borough in their commitment to build more housing and excited to build more high-quality homes for local residents in Tower Hamlets.**



L-R: Cllr Rachael Blake, Cabinet Member for Adults, Health and Wellbeing, Cllr Mohammed Ahab Hossain, Speaker of the council, Mayor John Biggs, Cllr Peter Golds and Rushanara Ali MP took part in the tree planting event at Victoria Park after the memorial service

# Tributes paid to Covid-19 frontline workers and loved ones lost

## COMMUNITY NEWS

Tower Hamlets stopped to pay tribute to those who have lost their lives since the start of the Covid-19 pandemic and to celebrate the response of the local community at a series of remembrance events in October.

Among the events, buildings across the borough were lit up in blue and tree and bulb planting took place in ten parks across the borough.



**As we enter winter, it is critical that we do not let our guard down and are vigilant against the threat that Covid-19 continues to pose.**

Special guests including NHS workers, teachers, local politicians, faith leaders, community groups and representatives from the borough's voluntary sector also gathered at The Hub in Victoria Park for a special memorial service.

Tribute was paid to Nick Hague, headteacher of Marner Primary School, who died of Covid-19.

"He was just doing his job, the same job that everyone has been doing, the same effortless sacrifice in volunteering and going the extra mile," said Fanoula Smith, headteacher at St. Saviour's Primary School.

"We are all in the same storm, but we've been in very different boats. Even though the storm has passed, the ripples are still with us."

"Children give us the strength to continue. Their resilience is remarkable and it continues to be. They've carried on learning whatever way we have asked them to."

Richard Desmond, Chair of Victoria Park Friends, took part in one of the tree planting events and paid tribute to park workers. He said: "It's difficult now to realise quite



Tree and bulb planting took place in ten parks across the borough

how scary 2020 was. The amount of effort that went into reopening the park was astonishing.

"Talk to people about the park and you'll soon realise how they feel about it, very quickly. This park is very loved, and so are the staff, they do a remarkable job and we're very grateful to them."

Rushanara Ali MP, Member of

Parliament for Bethnal Green and Bow, said:

"As we enter winter, it is critical that we do not let our guard down and are vigilant against the threat that Covid-19 continues to pose."

For more information and to share your own experience of the pandemic, visit [www.towerhamlets.gov.uk/thremembers](http://www.towerhamlets.gov.uk/thremembers)

# A new history for Whitechapel

## COUNCIL NEWS

Plans to create a state-of-the-art life sciences cluster in the East End which could support more than 5,000 jobs for local people moved a step closer last month, as a property deal to breathe new life into old buildings and empty sites in Whitechapel was announced.

Queen Mary University of London announced the deal with the Department of Health and Social Care and Barts Health NHS Trust that will help establish Whitechapel as a major centre of excellence in life sciences.

John Biggs, Mayor of Tower Hamlets, said:

“The partnership between Queen Mary and Barts Health NHS Trust to create a Whitechapel Life Sciences Cluster is a major coup for Tower Hamlets.

“Not only will our residents benefit from better treatments and health outcomes, but the Cluster will create economic opportunities that will also change lives.

“By establishing Whitechapel as a major centre for the life sciences, the area will attract significant new investment and business opportunities, and, importantly, provide our young people with the chance to train and develop high quality careers in the life sciences.

“Whitechapel is steeped in history which has made it one of



**Steeped in history: Improvements are underway in Whitechapel, 'one of London's most famous places'**

London's most famous places. We are now creating a new history with major developments including the new Elizabeth Line station, the renovation of the historic Royal London Hospital building into a new town hall and now a world class life sciences hub.”

The announcement of the deal to help establish Whitechapel as a major centre of excellence in life sciences comes as the council and TfL also announced their successful joint-bid to secure £9.3m from the government to support the Whitechapel Road Improvement Programme.

Under the Whitechapel Road

Improvement Programme, the area of Whitechapel Road from the junctions with New Road and Vallance Road, to Cambridge Heath Road and Sydney Street, will see improvements to pavements, streetlights and the public landscape as well as upgrades to market stalls.

A consultation to seek the views of residents and businesses on the improvement programme closes on 9 January 2021. To have your say, visit [talk.towerhamlets.gov.uk/wrip](http://talk.towerhamlets.gov.uk/wrip).

For more information on plans for the Whitechapel life sciences cluster, visit [www.whitechapelroadconsultation.co.uk](http://www.whitechapelroadconsultation.co.uk)

## Drug dealers raided

Two kilograms of Class A drugs, £120,000 in cash and more than £100,000 worth of assets linked to money laundering – including a £50,000 vehicle – were all seized in dawn raids cracking down on drug dealing in Tower Hamlets.

The raids, which were part of the ongoing Operation Continuum to tackle drug dealing, drug use and associated criminality in Tower Hamlets and neighbouring Hackney, also resulted in 19 arrests.

Cllr Sirajul Islam, Cabinet Member for Community Safety, said:

“Through Operation Continuum we are sending a clear message to all those involved. This will not be tolerated in our borough.”

For more information, visit [www.towerhamlets.gov.uk/operationcontinuum](http://www.towerhamlets.gov.uk/operationcontinuum)



**£120,000 in cash was seized in the raids**

## Government U-turn on Westferry Printworks

A planning application to redevelop the Westferry Printworks, which was approved by a government minister last year despite opposition from the council, has now been formally rejected by the government in a U-turn.

The original appeal decision went against the borough's local development plan and the wishes of residents. Tower Hamlets Council successfully challenged the original decision to grant permission on the grounds of apparent bias by the former secretary of state.

Cllr Asma Islam, Cabinet Member for Environment and Planning, said:

“We are pleased that after many months and two public inquiries, both the inspector and the Secretary of State agreed that the scheme should be refused permission.

“This decision supports our view that the proposed scheme was inappropriate for the site in both



**The proposed development went against the borough's local development plan and the wishes of residents**

scale and height.

“It would have significantly impacted important heritage sites and it also failed to maximise affordable housing and family-sized

homes.

“In all, it was a bad deal for our borough and we are satisfied with the outcome.”

## Spitalfields referendums results

Two referendums required by the 2011 Localism Act to decide whether a neighbourhood plan for Spitalfields should be used when deciding planning applications for the area were held in November, delivering different results.

In the referendum for residents, voters backed the use of the plan by 298 votes to 252 votes, with two spoiled ballots. However, in the referendum for businesses, voters rejected the use of the plan by 70 votes to 18 votes.

As only one of the referendums passed, the council will now make a decision on the future of the Spitalfields Neighbourhood Plan. More details will be published on [www.towerhamlets.gov.uk/neighbourhoodplanning](http://www.towerhamlets.gov.uk/neighbourhoodplanning)



Local children and parents at the opening of the new Millwall Park playground

# New Millwall Park playground ‘just what is needed for the local area’

## YOUNG PEOPLE AND FAMILIES

Crowds of excited and eager children and parents streamed into the new Millwall Park playground for its official opening during October half-term.

Designed to make play more accessible to children and young people of all abilities, including those with special educational needs and disabilities, the new playground features play equipment, safety surfacing, paths, benches, and picnic tables. It also has a landscaped area with a sensory space and nature zone.

Millwall Park playground is the

latest in a series of enhancements to parks in Tower Hamlets as part of the council's ongoing £10 million investment programme to improve over 60 of the borough's parks and open spaces.

Local parents and children, who were consulted about plans for the design of Millwall Park playground, said they wanted new and better park equipment and a combined space for both young and older children to play.

Island Gardens resident Aneita Lewis and her eight-year-old daughter, Olivia, were among the first visitors.

“When Olivia was a baby, the

equipment was old, and we stopped coming here.” Aneita said.

“We’d travel to other parks instead. Now, it’s amazing to have this new playground on our doorsteps. I love that it’s enclosed and safe. I can imagine us being here in summer with a picnic having a good day out.”

Lorraine Cavanagh OBE, chief executive officer of community organisation, The Dockland Settlement, and Chair of Millwall Park and Island Gardens User Group, said: “This playground is just what is needed for the local area, children can now come to the park and stay for longer with an exciting and adventurous area to call their

own. Parents have an opportunity of meeting and making friends, sharing experiences, and forming long term relationships.”

For further information visit [www.towerhamlets.gov.uk/parks](http://www.towerhamlets.gov.uk/parks)

## Coming to a park near you

- Sports changing rooms at Millwall Park are earmarked for refurbishment by March 2022
- Work on a new playground at Ravenscroft Park, Bethnal Green, is scheduled to begin in January 2022. The playground will be closed for three months while the work is taking place.

# Children and Family Centres are ‘the place to be’



Aldija Zarita speaking at an event about her experiences

Raising young children is a juggling act for many parents and for those who do not have support in place, it can be a lonely struggle.

For mother of two Aldija Zarita, an unexpected conversation at the school gate about children's centres would go on to transform her life.

“I didn't even know that we had the children's centre,” said Aldija. “I was lucky to live five minutes away, so I went, and I was really surprised. I was able to speak to other parents, my children were able to make friends. I was getting really bored at home, I didn't know anyone.”

“I met people like me, and we all stuck together, we became more

confident. I started to go to more sessions, do more courses. They were able to provide a crèche too.

“Any course that they ran, I put my name down, just to be out of the house and to meet other parents.”

After Aldija's children entered full-time education, she became a volunteer at the centre, which put her on a new path to employment.

“I really learned a lot about early years and how to interact with children and then from there, I decided to do the childcare course.”

Through her local centre, Aldija completed her Level 1 and Level 2 childcare qualifications for free and was given a loan by the council to

complete her Level 3 qualification. She has worked as a crèche worker since.

“At the time, for me, the children's centre was the place to be. That was where I belonged. It's nice for children but also for parents too.”

There are 12 Children and Family Centres in the borough. They are free, open to all, and offer a range of services for families, children and young people from 0 to 19-years-old and children with special educational needs and/or disabilities (SEND) up to 25-years-old.

Visit [www.towerhamlets.gov.uk/earlyhelp](http://www.towerhamlets.gov.uk/earlyhelp)





## Six thousand elect new young mayor and deputies

Sixteen-year-old Tahmid Hussien has been confirmed as the new Young Mayor of Tower Hamlets, following an election in which 6,000 votes were cast by young people.

Along with five new deputy young mayors also elected in October, Tahmid will speak up for young people at the Town Hall for a two-year term.

“My main task is to determine our priorities,” Tahmid said. “People I’ve spoken to tell me that mental health and wellbeing, gangs, knife crime, drugs, sexual health, housing, and more opportunities in education, training and employment are all

important to them.

“It’s my job to work with the five deputy young mayors, the youth council and various forums, like the SEND forum and youth empowerment board, to make sure everyone is heard before agreeing three main items of work for our term.

“I need to hear from you, so please contact me, invite me to your events and let’s start that conversation to make our borough a better place.”

Visit [www.towerhamlets.gov.uk/youngmayor](http://www.towerhamlets.gov.uk/youngmayor) to contact the Young Mayor of Tower Hamlets and to find out more.



The newly-elected young mayor and his deputies (from left-to-right): Mohsen Ali, Ablah Chazhiyattiri Peedikayil, Tahmid Hussien (young mayor), Rhianna Fowell, Intisar Al-Alam, and Hafizur Rahman

# Where can I find my Children and Family Centre?

**Meath Gardens**, 1 Smart Street,  
London, E2 OSN

**Mowlem**, Wadeson Street,  
London, E2 9DL

**Collingwood**, St Bartholomew  
Gardens, Buckhurst Street,  
London, E1 5QT

**Marners**, Marners Centre,  
Devas Street, London, E3 3LL

**Overland**, 60 Parnell Road,  
Bow, London, E3 2RU

**Mile End**, 9 Bede Square,  
Joseph Street, Off Bow Common  
Lane, London, E3 4GY

**Wapping and Bigland**,  
15 Richard Street,  
London, E1 2JP

**John Smith**, 90 Stepney Way,  
London, E1 2EN

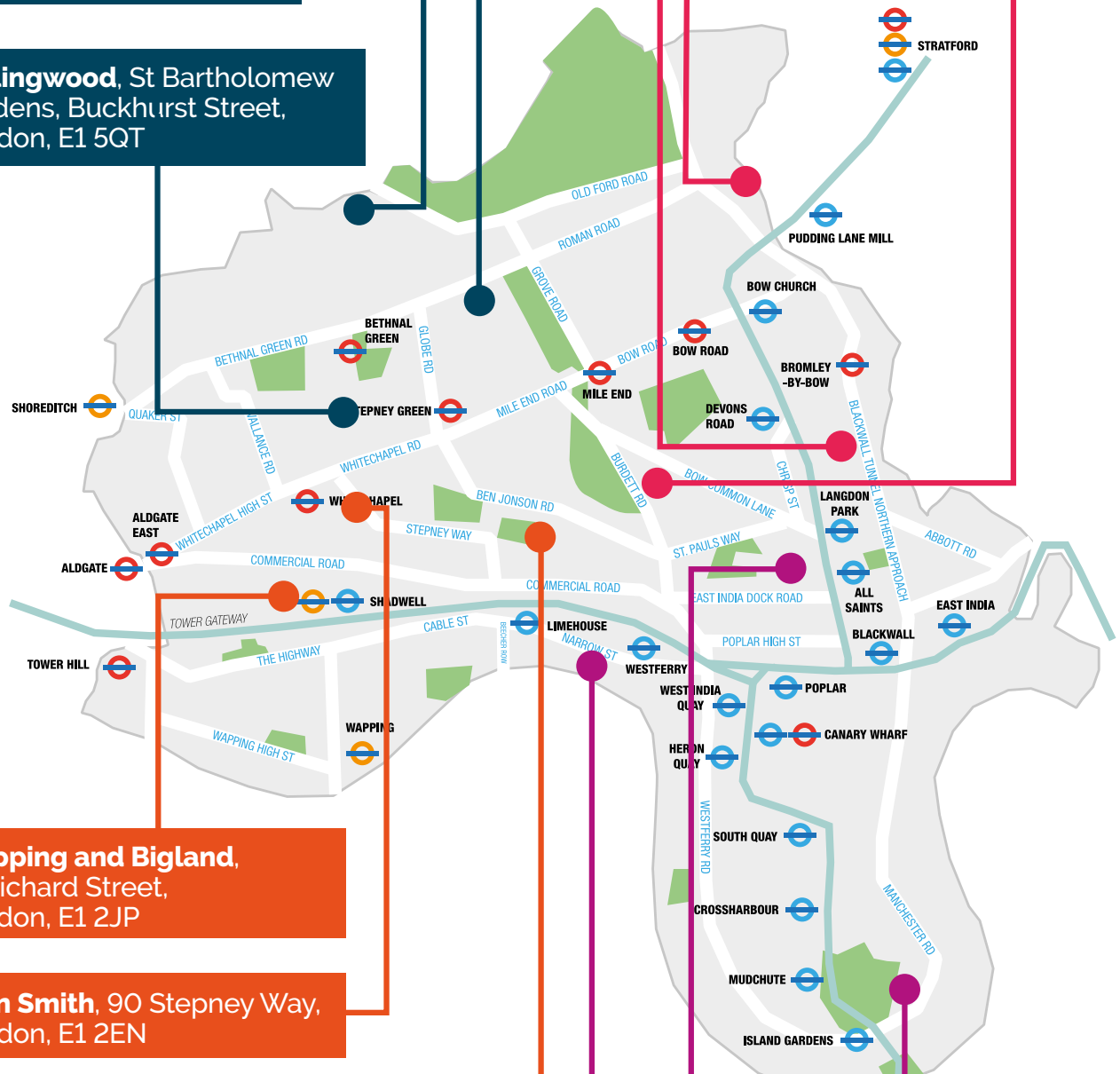
**Ocean**, Whitehorse Road,  
London, E1 OND

**Isle of Dogs**, Millwall Park,  
Stebondale Street, London, E14 3BX

**Chrisp Street**, 45 Kerbey Street  
London, E14 6AW

**Around Poplar**, 115 Three Colt Street,  
London, E14 8AP

- North east locality
- North west locality
- South east locality
- South west locality



# Investing in families, children and young people

The council's new Early Help and Children and Family Service was celebrated across the borough during September and October at the newly named Children and Family Centres (formerly Children's Centres).

The new service and Children and Family Centres supports families, children and young people from 0 to 19-years-old and children with special educational needs and/or disabilities (SEND) up to 25-years-old. The aim is to support families at the earliest point when issues first appear and to stop them from getting worse.

Four launch events took place across Tower Hamlets to raise awareness of the services and support available locally, starting with the opening of our brand-new Children and Family Centre at Chrisp Street.

This included a street party for local families and special guests, including Cllr Asma Begum, Deputy Mayor and Cabinet Member for Children, Youth Services, Education and Equalities, and representatives from Telford Homes and Poplar HARCA also in attendance.

Launch events were attended by hundreds of families, children and young people who had the chance to experience some of the sessions run in the centres and to speak to local partner organisations.

Children and Family Centre partnerships include those organisations who offer housing, parenting programmes, employment services, mental health services, and education which includes all local schools.

Working with partner agencies ensures that families get the right help, at the right time, from the right people.

For more information, please go to [www.towerhamlets.gov.uk/earlyhelp](http://www.towerhamlets.gov.uk/earlyhelp) or email [ehcfs@towerhamlets.gov.uk](mailto:ehcfs@towerhamlets.gov.uk)

## Mayor of Tower Hamlets, John Biggs, said:

"It is always great to see new investment in our services, especially as we begin to recover from Covid and continue to prioritise giving every child the best possible start in life.

"Our Children and Family Centres play a particularly important role in this ambition, through supporting some of our most disadvantaged families and offering, when needed, extra support and early intervention."



# Alex finds out who she really is

When the 'true East End girl' dug into her family history she found a hidden Jewish past, and links to the Battle of Cable Street and slavery... but not the ones she expected

## HISTORY

By **JOHN RENNIE**

BBC's 'Who Do You Think You Are?' regularly throws up surprises. But when Alex Scott featured recently, an expected revelation was turned on its head – making for one of the most emotional episodes ever. And, over the course of 60 minutes, Alex emerged as the ultimate East Ender, a perfect example of the melting pot of countries, cultures and races that has made our bit of London so special over the centuries.

It's a bittersweet journey though, with Alex's mixed Jewish, West Indian, Irish and English ancestry bringing in racism, slavery, anti-semitism and the Battle of Cable Street. Meanwhile, the story of a lost relative also makes Alex re-examine her own battles with depression.

Born in Poplar in 1984, Alex emerges as a driven character. Signed by Arsenal at eight, she would win 140 England caps and represent Team GB in the 2012 (East End) Olympics. Always with her eye on the next prize, she has gone on to a career on TV, hosting *The One Show*, presenting the BBC's 2020 Olympic coverage, and presenting *Football Focus*. And on *Strictly Come Dancing* in 2019, she showed she'd lost none of that will to win.

Forward-focused, she says after signing for Arsenal she 'never looked back', brought up in a family 'where you don't ask many questions'. Indeed it emerges that she knows little of her family history. As the episode begins, she is desperate to know more. Alex's



**The Battle of Cable Street: East Enders massed to stop the fascists marching through their streets**

mother, Carole McKee, was a single white woman having a hard time in Poplar raising two mixed-race kids with no dad around, and it wasn't easy for Alex either. She says: "I wasn't black enough to be black, not white enough to be white. Who am I? Where do I fit?"

She discovers her mother's father came over from Northern Ireland in the 1950s. And things get interesting when mum Carole mentions her own granddad, 'Phil G' (Philip Gittleson), a bookie's runner (at a time when off-course betting was still illegal) who was attacked by fascists at the Battle of Cable Street in 1936.

So it's first stop the Sandy's Row Synagogue in Bishopsgate. There she discovers from historian Alan Dean that Phil G's parents, Morris and Dora Gittleson, had fled the anti-Jewish pogroms in Jagory, Lithuania at the end of the 19th century. They were just two among an estimated two million Jews who fled Russia between 1881 and 1914. The Yiddish-speaking pair settled in Artichoke Hill, off what is now The Highway.

Life was tough, with nine family members living in two rooms in 1911. And when they stepped outside the front door, they would have had to deal with everyday anti-semitism.



**Alex has moved from being an athlete to a successful career in broadcasting**



**The Cable Street Mural: Alex had passed the artwork hundreds of times without giving it a second glance**



**Oswald Mosley: The Blackshirt leader fanned the flames of anti-semitism in the East End 85 years ago**

Family members emerge and with them terribly sad stories. From the 1939 census we learn that Phil's older brother Abraham was being held in the Colney Hatch asylum in Friern Barnet, north London. We see pictures of a broken Abraham, his case notes suggesting causes for his breakdown being 'unemployment, poverty and stress'. As for the 'paranoid delusions' he was now suffering, historian Dr Vicky Long suggests that with anti-semitism rife in Britain, and with Blackshirts marching through the East End and attacking Jews, 'paranoia' was no surprise. Abraham, admitted at 41 in 1934, would die in the asylum in 1963 at age 69.

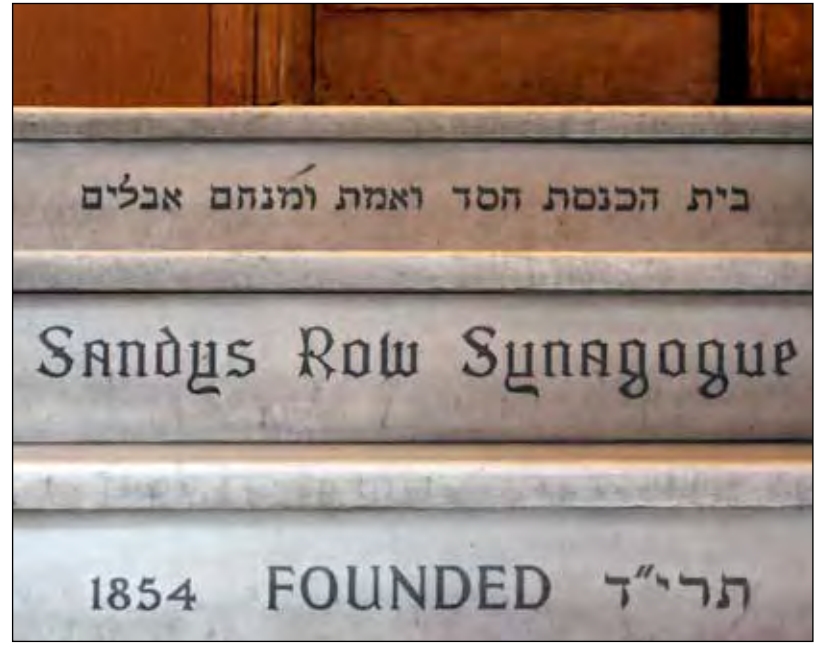
Back in Stepney, and the Gittlestons, who had fled anti-semitism to what they thought was a safe haven, were facing it again. On 4 October 1936, 2,000 of Oswald Mosley's Blackshirts decided to march through the East End, with the protection of 6,000 police. 100,000 people mobilised to prevent it happening. Many were Jews, Irish East Enders, communists, and

members of the Labour Party, but there were cockneys of every stripe, united under the slogan 'They shall not pass.'

On the show Alex meets historian Tony Kushner to discover more. And where better than Rinkoff's on Jubilee Street close to Stepney Green. It's one of the oldest Jewish bakeries in the East End, established in 1911. The Rinkoffs had also fled west to London, leaving their home in Kiev. Many Jewish people who fought at Cable Street would have shopped at Rinkoffs.

Tony explains that Phil G's beating was more likely from the police. There was three hours of fighting, but the fascists were largely protected, cowering behind a cordon of uniforms, before giving up and heading to Hyde Park instead. The battle was won, the Blackshirts 'did not pass', and The Jewish Chronicle reported Mosley's 'utter humiliation'.

The parallels are clear. Alex talks of her forebears "fighting for better, for a bigger thing, so that [I could] walk round the East End without



**Sandy's Row Synagogue: Having discovered her family was Jewish, Alex traced their journey from Eastern Europe**

looking over my shoulder." She reflects on her own determination to join the Black Lives Matter protests in recent years, 'to fight for the next generation coming through'. As she strolls down from Rinkoffs to look at the Cable Street Mural she marvels that she passed it hundreds of times on the way to school and never gave it a glance.

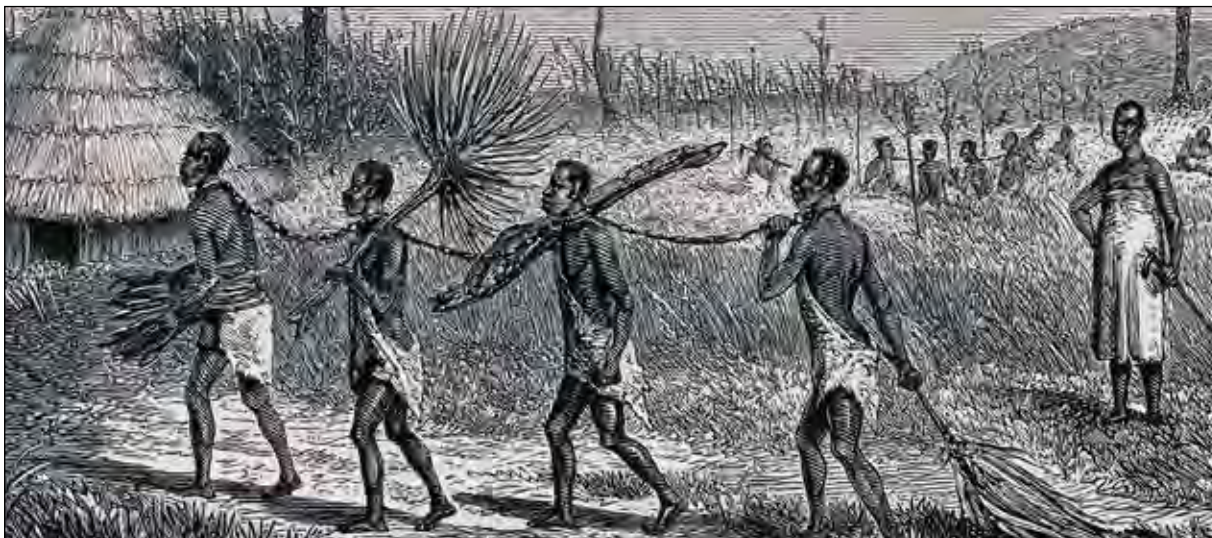
The road now inevitably leads through her beloved Jamaican grandmother to Jamaica itself, an island she has never visited. A trip to the Caribbean for mixed-race Alex will inevitably meet the slave trade as she goes back through the generations, but not quite in the way she expects. She finds her great-grandfather John Scott working for one of the biggest banana growers and exporters in Jamaica. A servant yes, but not a manual labourer, and even travelling to Boston in the USA for his employer. As she travels back into the 19th century she discovers the brutal reality of life on the plantations – huge broods of children, many dying young, adults dying of poor nutrition and a strict

stratification of society based on skin colour.

Birth certificates are shocking to modern eyes, with a pseudo-scientific attempt to pin people's racial profile down exactly. Alex's childhood memories of neither being black enough or white enough are thrown into sharp relief.

Those distinctions were however hugely important in 18th and 19th century Jamaica. Having white ancestors could confer (limited) rights to own property. But as Alex and historian Suzanne Frances Brown dig further back to abolition in the early 19th century, none of the family are listed as slaves. The reason becomes clear. Alex's four-times great-grandfather Robert Coombs, likely a man 'of colour' is listed in 1826 as owning 26 slaves. And with the end of slavery there are no reparations for the former slaves. Instead, the British Government pays the former owners £20 million for their loss of property. Robert is compensated for the 26 he has to give up. And in his will he leaves money to support children born to his wife, and 'reputed' children born to one of his female slaves.

A visibly moved Alex says: "At the start of this journey I thought we'd touch on slavery but I didn't think my family owned... people. I don't think the stories are told a lot about black people owning slaves." But having cleared the silence around her past, she has no regrets. As her distant cousin Donald Robinson scythes away the grass so Alex can view Robert's grave, he tells her "If you don't know where you're coming from, you can't know where you're going." Wiping away the tears, Alex says: "I will never be ashamed of the history... it's made me who I am."



**Slavery: She expected to find family links with the trade, but the truth came as a shock**



Local residents, members of the Brick Lane Trust, the Brick Lane Mosque, local business associations and the council all came together for a Big Clean Up

# Communities come together for a cleaner Tower Hamlets

## CLEAN & GREEN

Scores of volunteers from the local community in and around Brick Lane came together to don hi-vis jackets and litter-pickers, as part of a Big Clean Up event held in November.

Local residents, members of the Brick Lane Trust, the Brick Lane Mosque, local business associations and the council all joined forces for an afternoon of litter picking along one of London's most famous streets on 15 November.

The Brick Lane event followed other Big Clean Ups that have taken place in the Isle of Dogs and Wapping since the programme restarted in the summer, after a pause resulting from the impact of the Covid-19 pandemic.

Cllr Asma Islam, Cabinet Member for Environment and Planning, said:

“Keeping our streets and parks clean and free of litter is an ongoing challenge, and it is a responsibility that we all share to ensure that we get rid of our rubbish responsibly.

“Community clean ups are a great way for neighbours to come together and help raise awareness of the issue of littering and anti-social behaviour, while helping to clean their local park or street.”

To find out more, visit [www.towerhamlets.gov.uk/bigcleanup](http://www.towerhamlets.gov.uk/bigcleanup)



Big Clean Ups are a great way to meet your neighbours and keep your streets and parks clean



**Community clean ups are a great way for neighbours to come together and help raise awareness of the issue of littering and anti-social behaviour, while helping to clean their local park or street.**



Volunteers in Wapping got together to clean up their local area

# Reduce, reuse and recycle this Christmas

The holidays are almost upon us and we wanted to share tips for a greener festive season. There are so many ways to reduce your waste, reuse more and recycle as much as you can so celebrating doesn't cost our planet.

## Reduce

- Put sustainability at the top of your Christmas list and consider presents that promote sustainable living, such as reusable water bottles and travel mugs.

- Using LED festive lights uses less electricity than other types of lighting.
- Get creative in the kitchen! Use your food leftovers to create new recipes and reduce food waste. BBC Good Food has a selection of recipes to get you inspired here: [www.bbcgoodfood.com/recipes/collection/christmas-leftovers-recipes](http://www.bbcgoodfood.com/recipes/collection/christmas-leftovers-recipes)

## Reuse

- Save and reuse decorations, bows,

- and packaging for next year.
- Reuse the boxes and packaging that online shopping arrives in for wrapping gifts.

## Recycle

- Foil and dyed wrapping paper cannot be recycled – instead choose brown craft paper which makes a great recyclable wrapping paper.
- When you recycle boxes, make sure you flatten the cardboard.
- Avoid food contamination

impacting your recycling by always rinsing out food residue before putting your containers in the recycling.

- If you live in a kerbside property, order a compost caddy ahead of the holidays for all your food waste to be recycled. To order your compost caddy, call Streetline on 020 7364 5004.

If you need more information about what goes into the recycling bin, visit our website: [www.towerhamlets.gov.uk/recycling](http://www.towerhamlets.gov.uk/recycling)



## How to recycle your Christmas tree

Christmas tree collections will be taking place from 3-21 January 2022.

The trees will be taken to the facility that processes your garden waste and will be turned into compost. Make sure you remove all decorations from the tree before leaving it out to be recycled. Trees can also be taken to the Tower Hamlets Reuse and Recycling Centre, Yabsley Street, E14 9RG.

### If you live in a block of flats:

- Please contact your property landlord or management company who can arrange collections from the nominated communal collection points.

### If you live in a kerbside property:

- If you currently receive a kerbside food and garden waste collection, please leave the tree out for collection on your scheduled day during this period.

## Tower Hamlets Partnership agrees plans for net zero carbon borough by 2045

A plan to make Tower Hamlets a net zero carbon borough by 2045 or sooner has been given the green light by a 'climate alliance' of housing, education, health, the community and voluntary sector, business organisations in the borough and by the council.

Under the plan, the 20-member

alliance will work together towards the 2045 target to reduce greenhouse gas emissions and offset remaining emissions, by finding ways to reduce energy consumption, creating sustainable supply chains and nurturing biodiversity through planting trees and greening the borough. This plan will focus on a fair and just transition towards net zero carbon.

The 2045 net zero carbon borough target comes on top of the council's commitment to become a net zero carbon council by 2025.

The unveiling of the plan for Tower Hamlets came as the United Nations Climate Change Conference at COP26 took place in Glasgow, where world leaders met to respond to the climate emergency.

Mayor of Tower Hamlets, John Biggs, said:

"The climate emergency is one of the world's most pressing issues



impacting our lives and in Tower Hamlets we are working to ensure we are as sustainable as possible.

"This means doing everything we can to improve energy efficiency of buildings, ensuring the council is powered by 100% renewable energy, converting street lighting to LED lights and planting trees in our streets and in our beautiful parks.

"We are also working to tackle air pollution by expanding the number of electric vehicle chargers across the

borough and increasing the amount of cycle hangars to encourage greener journeys.

"We welcome the Net Zero Carbon Partnership Action Plan and look forward to working closely with organisations across the borough as only by working together can we achieve the net zero carbon target in Tower Hamlets."

[www.towerhamlets.gov.uk/netzerocarbon](http://www.towerhamlets.gov.uk/netzerocarbon)

“  
**The climate emergency is one of the world's most pressing issues impacting our lives and in Tower Hamlets.**



**LOVE  
YOUR  
NEIGHBOUR  
HOOD**



**TOWER HAMLETS**

# Domestic, Recycling and Commercial Waste Collections Christmas and New Year 2021/2022

Over the bank holiday period there will be changes to your normal rubbish, recycling, food and garden waste collection arrangements.

Friday 24th December		Normal Service
Saturday 25th December	Christmas Day	No Service
Sunday 26th December	Boxing Day	No Service
Monday 27th December	Bank Holiday	Normal Service
Tuesday 28th December	Bank Holiday	Normal Service
Wednesday 29th December		Normal Service
Thursday 30th December		Normal Service
Friday 31st December		Normal Service
Saturday 1st January	New Year's Day	No Service
Sunday 2nd January		No Service
Monday 3rd January	Bank Holiday	Normal Service

\*Please ensure your waste and recycling (including food and garden waste) is available for collection before 7am on your scheduled collection day.

## Christmas tree recycling



There will be a collection for the recycling of real Christmas trees from the 3rd to the 21st January 2022

If you currently receive a kerbside food and garden waste collection, please remove any decorations from the tree and leave out for collection on your scheduled day during this period. If you do not have kerbside services, please contact your property landlord or management company who can arrange collections from the nominated communal collection points.





# Inspirational five awarded Freedom of the Borough

## COMMUNITY NEWS

Five individuals who have given years of service to Tower Hamlets have been awarded the borough's highest honour – the Freedom of the Borough.



**I'm delighted that councillors have voted unanimously to award the freedom to each of the candidates and congratulate them on achieving our borough's highest honour.**



**Highest honour: The Freedom of the Borough is rarely awarded**

Councillors voted unanimously to award the Freedom of the Borough to Sister Christine Frost FCJ, Sufia Alam, Sir George Iacobescu CBE, Abdul Aziz Sardar and Jim Fitzpatrick at a special ceremony held at the Tower of London in October.

It is only the second time in twenty years that the Freedom of the Borough has been awarded, with the last given in 2018 to retired Commander John Ludgate, who served as the Deputy Lieutenant for

Tower Hamlets for 22 years.

The Speaker of the Council, Cllr Mohammed Ahab Hossain, said:

"It was after considerable discussion, with the knowledge of the unique importance of the award, that we agreed the final list of worthy candidates. I'm delighted that councillors have voted unanimously to award the freedom to each of the candidates and congratulate them on achieving our borough's highest honour."

# New campaign to celebrate Tower Hamlets

Private sector, public sector and community and voluntary sector organisations in Tower Hamlets came together last month to launch a new campaign to celebrate and promote the borough.

The 'Tower Hamlets is' or 'TH IS' campaign was launched by the Tower Hamlets Partnership, a cross-borough group of eleven organisations who are committed to the borough's success as a place.

Feedback taken on in the planning stages of the campaign on what makes Tower Hamlets what it is has resulted in four key themes of history, culture, community and opportunity.

Find out more by visiting [www.towerhamlets.is](http://www.towerhamlets.is)

# £1.5m pledged to tackle inequality

More than £1.5 million will be spent delivering a plan to help tackle inequality and make Tower Hamlets an anti-racist borough, after Tower Hamlets Council's Cabinet gave the plan their backing.

As part of the spend, £500,000 will be allocated towards tackling health inequalities and more than £170,000 for community leadership programmes. £318,000 will be allocated to support children and young people and £200,000 towards a range of employment initiatives.

Cllr Asma Begum, Deputy Mayor for Children, Youth Services, Education and Equalities, said:

"We can be proud to be making such a significant funding commitment which will go hand in hand with a relentless focus on addressing the issues that continue to limit opportunities for many of our residents."

# Civic Awards

Nominations for the Civic Awards are now open.

If you know an unsung hero or heroine who should be recognised for their work and is deserving of an award, visit [www.towerhamlets.gov.uk/civicawards](http://www.towerhamlets.gov.uk/civicawards) to nominate by Friday 7 January 2022.



**The people's choice: Victoria Park has again been chosen as one of the nation's favourite parks after a public vote**

# Victoria Park is the people's choice once again

A public vote to find the UK's top ten best loved parks has once again resulted in Victoria Park making the prestigious list – for the eighth year running.

More than 32,000 people across the UK took part in the voting for the 2021 People's Choice Awards, which is run as part of the Green Flag Award scheme.

International Green Flag Award

Manager, Paul Todd, said:

"To be voted one of the nation's favourite parks is a real achievement and testament to all the hard work done by the thousands of parks staff and volunteers up and down the country who work tirelessly to make their parks fantastic places that everyone can enjoy."

Cllr Sabina Akhtar, Cabinet Member for Culture, Arts and Sport,

said:

"Thanks to our Victoria Park staff and the Victoria Park Friends who have supported us all through the pandemic and continue to work around the clock to keep the park award winning and in the nation's top ten."

For more details about the awards and the winners, visit [www.greenflagaward.org](http://www.greenflagaward.org)



Lee Boone, left, of Boone and Last and Lee-Ann Thomas of Hussey's, look forward to welcoming local shoppers

# 'Tis the season to shop local

Support your high street by buying gifts and booking Christmas parties locally

## JOBS AND ECONOMY

Did you know that shopping in your neighbourhood helps support the local economy by creating jobs and putting money into the pockets of people in the community?

Perhaps there's no better reason than to do some of your festive shopping at one of Tower Hamlets' unique high streets and markets and support your local community and businesses which were badly hit by the pandemic.

Lee Boone and Jenni Last had just opened their salon on Redchurch Street two weeks before the December lockdown last year, when they were forced to shut their doors.

"We were gutted about it," says Lee. "We took the time to finish off a few bits inside the salon, but then we were just not working. It was hard."

They were able to reopen on 12 April and have been busy getting back up to speed and recouping the business they lost last winter.

"I'm excited for December and for

a Christmas not completely tainted by the pandemic," Lee explains. "It's a busy time for us, we'll be working six days a week, but it's a lot of fun."

In Wapping, Lee-Ann Thomas is a co-owner of Hussey's, a grocery and butchers which has served the community for over 50 years. Lee-Ann was quick to support her customers through the pandemic by providing local deliveries to people that couldn't leave their homes.

She says, "Christmas is a wonderful time and we're looking forward to providing our customers with everything from the turkey to the trimmings to make their day special."

### Brick Lane Food Festival

If turkey isn't your thing, head down to Brick Lane from Saturday 3 December for the Brick Lane Food Festival. Eleven restaurants are taking part offering authentic Bangladeshi dishes and new menus. Find out more at [bricklaneeats.co.uk](http://bricklaneeats.co.uk)

### Roman around the Christmas Tree

Get festive and create your own decoration to add to the 20ft Christmas tree in Roman Road on Saturday 11 December from 12-3pm. The tree, donated by the council,

will be covered with handmade decorations created by pupils at local schools. Go to Gladstone Place, Bow, E3 5GS (just outside Idea Store Bow) to design, create and place your own decoration onto the tree. More details at [romanroadtrust.co.uk/roman-around-the-christmas-tree/](http://romanroadtrust.co.uk/roman-around-the-christmas-tree/)

## How the council has supported local businesses through the pandemic

- Over £200m distributed in government grants and rate relief to over 5,000 local businesses.
- 598 businesses benefitted from free, online, expert-led advice and guidance seminars.
- Our Pivot Programme aimed at small and micro businesses helped over 150 businesses with advice and grants up to £1,000. Owing to its popularity, a second wave, aimed at 150 more businesses is being rolled out.
- Our creative freelancer project supported 60 small businesses.
- We provided Covid-safe market support and six outdoor dining spaces.

# Job success at construction jobs fair

Over 100 young people from Tower Hamlets attended a jobs fair at New City College in September to gain advice and support on paid work placements, jobs and apprenticeships in the construction industry.

The event, which was delivered by the council's New Town Hall Project and WorkPath in partnership with Bouygues UK, saw over 100 young people from Tower Hamlets meet with potential employers across the industry including K10, Mullaley, Women in Construction, Berkeley and Telford Homes.

Among the young people at the event was 29-year-old Balsam



Balsam (second left) with Bernice Fullerton, WorkPath Construction Desk Officer, Hazel McNicholas, JRL Group Senior Health & Safety Advisor and David Woodhouse, Midgard JRL Group Project Director



**During the job fair, my advisor made the effort to introduce me to several employers which gave me the confidence to continue the conversations with them.**

Attitallah, who first registered with the Tower Hamlets WorkPath service at the end of 2020.

Balsam was interested in securing a role within the construction industry and was assigned an advisor who guided her on building her skillset and experience ahead of the fair, where she was introduced to a number of employers.

"My advisor was very helpful, patient and informative throughout

my time with WorkPath," Balsam said.

"She offered me a tailored service to cater for my specific career aspirations.

"During the jobs fair, my advisor made the effort to introduce me to several employers which gave me the confidence to continue the conversations with them."

Through the support of WorkPath and the jobs fair, Balsam was able to

gain an interview with JRL Group for a Health, Safety and Environment apprenticeship and has since been offered the role.

After she has finished her apprenticeship, she will be able to work as a health and safety advisor or manager.

For more information on how WorkPath can help you, visit [www.towerhamlets.gov.uk/workpath](http://www.towerhamlets.gov.uk/workpath)

## More jobs secured by young people through the Kickstart Scheme

Tower Hamlets has launched 33 internal placements as part of the Kickstart Scheme to give young people six months paid work experience to improve their chances of finding a permanent job.

The scheme, which launched last year, has successfully provided job opportunities across Tower Hamlets

with local young people having access to over 700 placements.

Each placement has been funded by the government, which pays the national minimum wage based on a 25 hour per week placement.

The scheme provides the opportunity for young people to gain valuable experience and

training, while the employer gets an additional resource.

In total, 370 young people aged 16-24 have started Kickstart placements through the Tower Hamlets gateway.

The council has added to this with the delivery of 33 placements paid at London Living Wage in which

16 young people have already been allocated placements in areas such as legal, housing, markets, children's services and employment and skills.

For more information on the Kickstart Scheme, the roles available and how to apply, visit [www.towerhamlets.gov.uk/kickstart](http://www.towerhamlets.gov.uk/kickstart)

## New skills give Dhanuka's confidence a LIFT



Dhanuka develops his technical knowledge through the LIFT programme internship

A skills programme launched earlier this year to help people get jobs in the technology, science and digital sectors is already making an impact, having been hailed as a 'fantastic opportunity' by one of its first participants.

Dhanuka Perera successfully applied for a ten-week mentored internship as a Full Stack Software Developer through the LIFT programme (Leading Inclusive

Futures through Technology) earlier this year.

"With the support of my mentor, I have learned to become resilient and develop my problem-solving skills with every aspect of the project journey from the beginning to the end," Dhanuka said.

"I have fully enjoyed my time on the internship as this has given me the technical knowledge and skills to develop my role as a Full Stack

Software Developer or for other roles that I can now apply for including Software Engineer and Website Developer.

"I would like to say thank you to One Tech and LIFT for the fantastic opportunity and also for their continued support during the programme."

To find out more about the LIFT programme, visit [www.liffutures.london](http://www.liffutures.london)

# Staying safe this winter

## HEALTHIER LIVES

The government has announced changes to existing Covid-19 guidance and restrictions, after the World Health Organization classed the new 'Omicron' variant of Covid-19 as a 'variant of concern.'

### Isolate

Under the changes, anyone who has been in contact with someone who has tested positive with the suspected Omicron variant will need to self-isolate for ten days, regardless of their vaccination status.

### Wear a mask

Face coverings on public transport and in shops are now mandatory across England, while secondary school staff and students are also strongly advised to wear face coverings in communal areas. To further help reduce the spread of Covid-19, it is advised that you should continue to wear a face covering in crowded and enclosed spaces where you may come into contact with other people you do not normally meet.

### Boosters for over 18s

The government has also announced the following changes to the booster vaccine programme:

- Over-18s are now eligible for a booster jab, three months after receiving their second dose



**Over 221,000 people in Tower Hamlets have been vaccinated**

- People with severely weak immune systems, who were invited for a third dose, are now eligible for a fourth dose

Please wait to be invited by the NHS before booking your next jab.

### Tests for UK arrivals

Anyone entering the UK will need to take a PCR test by the second day after their arrival and will need to self-isolate until they have a negative result.

### Travel red list

For anyone planning to travel abroad over the Christmas and New Year period, the government has extended its 'red list' of countries. Keep up to date by visiting [www.gov.uk/guidance/red-list-of-countries-and-territories](http://www.gov.uk/guidance/red-list-of-countries-and-territories)

## How can I do my bit and stay safe?

While news of a new variant and changes to government guidance and restrictions will be a cause for concern for many, the advice on how to best protect yourselves and your loved ones remains the same.

who is positive, get a PCR test. If you have no symptoms, get a rapid lateral flow test. One in three of us who have the virus don't show any symptoms, so regular testing, particularly before meeting others in indoor settings, is advised.

### 1. Get vaccinated

Get vaccinated, whether it is for your first, second or booster dose. You can join 221,000 other Tower Hamlets residents who have had their first jab and continue to come forward for their second and booster doses, by booking your jab online at [www.nhs.uk/coronavirus](http://www.nhs.uk/coronavirus). Anyone over the age of 12 is now eligible for a vaccine. After getting your jab, share your experience using #IHadMyJab.

### 4. Open a window

The NHS advises opening a window to let in fresh air and let out air which may have Covid-19 particles. This is particularly important if you have visitors to your home over Christmas.

### 2. Wear a mask

While wearing a mask on public transport and in shops is mandatory, it is also strongly advised for communal areas in secondary schools. It is also advised that you should continue to wear a face covering in crowded and enclosed spaces. Face masks help us protect each other and reduce the spread of the disease.

### 5. Wash your hands

Covid-19 can spread from handles, handrails and other objects which have been touched by an infected person, but regularly washing your hands for 20 seconds with warm soapy water helps remove the virus from your hands before it has had a chance to infect you.

### 3. Get tested

If you have symptoms or have been in contact with someone

### Had your flu jab?

The NHS is also encouraging those eligible to take-up a free flu jab to boost their protection this winter. Taking the flu jab helps to keep the most vulnerable well through the winter season and helps ease demand for NHS services. Visit [www.nhs.uk/flujab](http://www.nhs.uk/flujab) for more information.



# How to get ready for winter

Here are some top tips on being prepared and staying well. For more like these visit [www.towerhamlets.gov.uk/winter](http://www.towerhamlets.gov.uk/winter)

You can get a free flu jab if you're aged over 65, are pregnant, or have a long-term health condition. If you haven't heard from your GP, speak to your GP or local pharmacist.



Protect yourself from the severe effects of Covid-19 by being vaccinated. Everyone aged 12 and over is eligible. Find out more call **020 7364 3030** or visit [www.towerhamlets.gov.uk/vaccine](http://www.towerhamlets.gov.uk/vaccine)



Take care of yourself and people in your community who may be more vulnerable. See info on local services for those who may be isolated and experiencing loneliness call **0300 303 6070** or visit [www.towerhamletsconnect.org](http://www.towerhamletsconnect.org)




Need to speak to someone? The Tower Hamlets Mental Health Crisis Line is free and available 24/7: **0800 073 0003**



111 online can help you if you have a medical problem and you don't know what to do. Visit [111.nhs.uk](http://111.nhs.uk)



  
**@MulberryTH**  
**FOLLOW US**  
on social media for  
**REGULAR UPDATES**  
ABOUT SCHOOL LIFE



**CONFIDENCE CREATIVITY  
LEADERSHIP AND A  
LOVE OF LEARNING**

Mulberry School for Girls is a vibrant, high achieving girls' comprehensive school for pupils aged 11 to 18.

Our school is a place where the talents and abilities of girls are nurtured in a safe, creative space and where our pupils can develop their ambitions, creativity, leadership and the power for self-determination. We believe these attributes will enable our pupils to lead enriched, happy and fulfilled lives, making a contribution to their own community, to British society and to global well-being.



**OUR ENRICHMENT OFFER INCLUDES:**

- ◆ **ARTS EDUCATION** Special projects (e.g. Edinburgh Fringe) and relationships with internationally renowned artists
  - ◆ **GLOBAL EDUCATION** Model United Nations and Youth Conferences
  - ◆ **OUT OF HOURS LEARNING** Over 50 weekly lunch-time and after-school clubs
  - ◆ **WOMEN'S EDUCATION** Women of the World Festival and Women's Conferences
  - ◆ **STUDENT LEADERSHIP** Prefects, School Council, public speaking, high profile event hospitality
- ....and much more!**



This includes special projects like the **Mulberry STEM Academy** in partnership with Mercedes-Benz Grand Prix Ltd.

**Mulberry School for Girls**  
Richard Street | Commercial Road | London E1 2JP  
☎ 020 7790 6327 | ✉ admin@mulberryschoolforgirls.org  
🐦 @MulberryTH | 🌐 www.mulberryschoolforgirls.org

Part of the  
**Mulberry**  
Schools Trust

**USE THE  
QR CODE  
TO VISIT OUR  
WEBSITE**



# Bollywood dancing, pie and mash and a lot of laughs at fun day

## MAYOR'S COVID RECOVERY FUND

More than 100 residents joined in a fun day to thank volunteers for their hard work during the pandemic and to let their hair down.

Neighbours in Poplar hosted the celebration at St Matthias Community Centre, thanks to funding from the Mayor's Covid Recovery Fund.

The Mayor's Covid Recovery Fund is a £3 million scheme aimed at kickstarting the borough's economic, health and social recovery from Covid-19.

This was the second celebration event Neighbours in Poplar had organised specifically for volunteers.

Entertainment was provided by a Bollywood dance troupe, Pearly King and Queen and a singer who blasted out hits from the 1960s.

Mandy Molyneux, from Neighbours in Poplar, said:

"It was a fantastic event and we have had great feedback from residents.

"Residents were happy to attend a



A fantastic event: Neighbours in Poplar hosted the event which was supported by the Mayor's Covid Recovery Fund

large event where they could socialise and have fun as the lockdown was difficult for many who became quite isolated as they lived by themselves.

It was lovely to see so many of our regulars at the fun day and we are delighted to be able to serve the community now restrictions have

been lifted."

For more information on the Mayor's Covid Recovery Fund, visit [www.towerhamlets.gov.uk/mcrf](http://www.towerhamlets.gov.uk/mcrf)

## Half million pound boost for business as new grants launched

Hundreds of small businesses in Tower Hamlets are set to benefit from grants of up to £1,250 after three new schemes to support them out of the pandemic were launched last month.

Nearly half a million pounds has been set aside for the grants, which will be allocated to businesses through the Business Adaptation Grant, the Creative and Cultural Futures Project and the Pivot Project 2 scheme.

A pot totalling £478,500 is available for the grants, which is part funded by the Mayor's Covid Recovery Fund.

Speaking after the launch of the new grant schemes at Tobacco Dock on 24 November, John Biggs, Mayor of Tower Hamlets, said:

"The Mayor's Covid Recovery Fund was established to support the economic, health and social recovery here in Tower Hamlets.

"Covid-19 has had a huge impact on us all, including businesses and these three grant schemes provide a welcome boost for them and a boost for the local economy."

Cllr Motin Uz-Zaman, Deputy Mayor and Cabinet Member for Work, Economic Growth and Faith,

said:

"The pandemic has caused many businesses to close, while others that stayed open are struggling, but in taking action and creating grant schemes like these we are helping to support our local businesses and help stimulate the local economy.

Fashion designer Dragana Perisic was one of 50 people to successfully apply for a £1,000 grant through the first Pivot Project last year – a scheme to help businesses adapt to

new ways of working created by the pandemic.

"It was really difficult for me during the lockdown as my primary source of income was through shop sales," Dragana said. "With the shop closed I had to think about how to diversify my business."

Dragana invested the grant in the digital side of her business, upgrading her website and social media accounts to reach new customers with her fashion

accessories and handbags.

She said: "I am very grateful for the help I have received from the council and I am exploring new marketing routes and keeping my website up to date with beautiful images and products."

For business support and advice, visit [www.towerhamlets.gov.uk/business](http://www.towerhamlets.gov.uk/business)



The business community came together for the launch at Tobacco Dock

# “

**Covid-19 has had a huge impact on us all, including businesses and these three grant schemes provide a welcome boost for them and a boost for the local economy.**



Wood Wharf is a 30-acre development of new homes, commercial space and waterside walkways

# Changing places: Wood Wharf

**Graham Barker** explores the new developments at Wood Wharf – with waterside vistas and quirky sculptures along the way – on this walk from East India to Canary Wharf.

## WALK WOOD WHARF

A remarkable transformation is taking place at Wood Wharf as this new 30-acre neighbourhood is currently being constructed to the east of Canary Wharf. As you follow this walk, you'll see it taking shape. Wander along dockside terraces, seek out sculptures amid the skyscrapers and finish with a festive stroll around Canary Wharf.

From East India DLR station head over the glazed footbridge – with the Aspen Way traffic zipping below – and step down

Start:	Finish:	Distance:	Allow:
East India DLR station	Canary Wharf DLR station	2.2 miles	70 minutes



(1) Lush water gardens at Clove Crescent

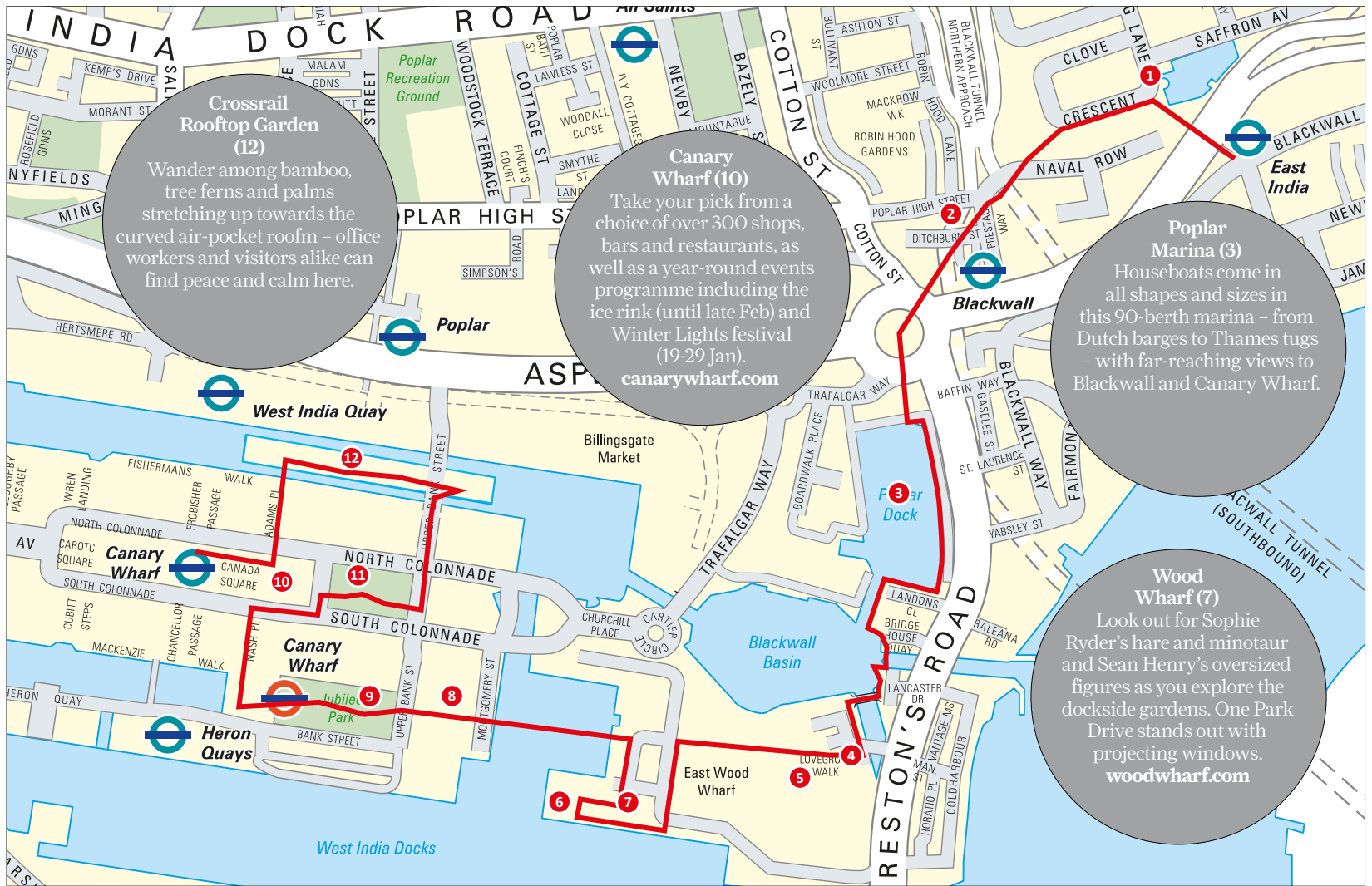


(2) Peer up to the Blackwall Line sculpture



(3) House boats berthed at Poplar Marina





**Crossrail Rooftop Garden (12)**  
Wander among bamboo, tree ferns and palms stretching up towards the curved air-pocket roof – office workers and visitors alike can find peace and calm here.

**Canary Wharf (10)**  
Take your pick from a choice of over 300 shops, bars and restaurants, as well as a year-round events programme including the ice rink (until late Feb) and Winter Lights festival (19-29 Jan).  
[canarywharf.com](http://canarywharf.com)

**Poplar Marina (3)**  
Houseboats come in all shapes and sizes in this 90-berth marina – from Dutch barges to Thames tugs – with far-reaching views to Blackwall and Canary Wharf.

**Wood Wharf (7)**  
Look out for Sophie Ryder's hare and minotaur and Sean Henry's oversized figures as you explore the dockside gardens. One Park Drive stands out with projecting windows.  
[woodwharf.com](http://woodwharf.com)

towards the office blocks clustered on Clove Crescent (1). Bubble-like pods sit beside the lake and as you continue between Republic's Import and Export offices you're flanked by water cascades, lush greenery and outdoor meeting spaces. Kim Bennet's trio of domino players sit at the end and there's a glimpse of the Mulberry Place town hall to your right.

Beyond the covered passage, step down through the towering dock wall – one of the few reminders that this area was once occupied by the extensive East India Docks, opened in 1806 to handle eastern cargoes of tea, spices, indigo and silk. During

World War II, floating Mulberry harbours for the D-Day landings were constructed here – hence the naming of Mulberry Place.

To your right, Robin Hood Gardens – zig-zag concrete housing designed by husband-and-wife architects Alison and Peter Smithson to create 'streets in the sky' – is gradually being superseded by the Blackwall Reach mixed-tenure development of over 1,500 new homes (2).

In the central plaza, the giant blue Blackwall Line sculpture loops skywards. Jo Chapman took the Blackwall hitch knot as her inspiration, and ringed it with an extract from Walter Downie's

Memoirs of a Blackwall Midshipman.

Continue through the wide underpass, in the shadow of high-level road and rail gyrations, and spiral up to the left. Around the corner, broad steps lead up to Poplar Marina (3).

Now home to a marina community of Dutch barges and houseboats, Poplar Dock was constructed in 1828 primarily to regulate water levels in the adjacent West India Docks. Imported timber was floated in the water to prevent it from cracking. And then from 1850 this became a railway dock, handling coal shipped from the north-east.

Skirt left around the marina.

On the first corner Anna Bisset's industrial-style Figurehead for Docklands sports a chimney brush, perhaps alluding to the coal once handled here. Viewed across the marina, two six-ton electric travelling cranes perch on the waterside. Prior to these, the dock machinery was powered by hydraulics – as you cut through the wall you pass the former accumulator tower.

Re-join the waterside – nipping through a metal gate opposite Landons Close – and continue across two up-and-over footbridges around Blackwall Basin. From the first bridge there's a glimpse eastward to the O2 Arena. The water channel in



Wood Wharf rises up beyond Blackwall Basin



(8) The Sun Pavilion in Montgomery Square



(9) Water pools cascade through Jubilee Park



**(7) Harbour Quay Gardens are dotted with quirky sculptures**

the foreground – now blocked – was originally the main ship entrance into the West India Docks. In the other direction there's the first sight of Wood Wharf's construction works, as well as Canary Wharf and the yellow roof struts of Billingsgate fish market.

The second footbridge angles over an old graving dock – ships would be sailed into here, the water drained, and repair works carried out. These days it's flanked by housing and there's a distant view beyond to the Blue Bridge which spans the present-day dock entrance.

The large white building with glazed facade and projecting roofline (4) will be a primary free school for 420 local children when it opens in 2022. In front, Leap – Franta Belsky's playful sculpture of seven dolphins – curls and swirls in the pool.

Wood Wharf is a 30-acre waterside development that will provide around 3,600 new homes alongside extensive workspace, retail and leisure facilities, public squares and waterside walkways. At the moment you'll see the area in transition – the

first residents have moved in but it's still partly a building site. Keep alert for construction vehicles along Brannan Street.

Harbord Square (5) has been landscaped with lawns, benches and a small children's play area. And as you slope up – building sites either side – you're entering what will become the heart of the commercial zone around the Market Hall and Frameworks.

At the top, turn left and continue past the showroom to South Dock. Here the views open far and wide – where once dockers offloaded cargoes, today it's a vista of steel and glass skyscrapers across the water.

One of the more remarkable buildings here is One Park Drive (6), a 57-floor cylindrical tower by Herzog and de Meuron designed with projecting windows to maximise daylight and wraparound balconies on the lower levels.

Wooden seating snakes along the entire boardwalk – a place to pause and enjoy the view – and the adjacent Harbour Quay Gardens (7) are dotted with an outdoor gym, children's musical playground and

Sophie Ryder's whimsical minotaur and hare perched on a bench.

Around the corner, another sculpture can be slightly startling – Sean Henry's oversized woman and man stare hauntingly at one another. E-scooter parking bays and cycle racks line the pavement.

Turning left along Water Street, two glazed pavilions float in the dock – nip across the gangplanks to investigate the restaurants and bars that have just opened here. On the pavement opposite, Richard Hudson's polished mirrored steel knot reflects the surrounding architecture in great clarity.

Beyond the bridge you arrive at Montgomery Square (8). At the moment, Morag Myerscough's Sun Pavilion dazzles in a riot of fluorescent yellows and pinks. Installed as part of the Summer Lights festival it will be superseded by the Winter Lights festival in January, when over 20 interactive illuminations will be installed around the Canary Wharf estate.

Over the road, make your way through Jubilee Park (9), landscaped with a sinuous line of babbling pools and Helaine Blumenfeld's lustrous bronze, Fortuna. Beneath here Sir Norman Foster designed the Jubilee line underground station within the Middle Dock's footprint. A curved glass canopy brings daylight into the vast ticket hall – it's worth taking an up-and-down escalator ride just to appreciate the engineering.

Six Public Clocks – a regimented installation by Konstantin Grcic, modelled on Swiss railways clocks – stands proud in Reuters Plaza. Towering above, the sleek silvered One Canada Square (10), designed by César Pelli for developers Olympia & York, forms the centrepiece of Canary Wharf. It's hard to imagine that 'Canary Wharf' was originally Fred Olsen's warehouse handling fruit and tomatoes from the Canary Islands. What a transformation.

Amid the dash-about office workers, head up the steps and veer

right into Canada Square (11). Until late February you can practice your figure skating on the covered ice rink here. Fairy lights wind around the trees and, for the peckish, there's a choice of Mexican burritos, Japanese grilled fish and British classics.

As you head north along Upper Bank Street, there's a glimpse left towards two giant bronze lions guarding HSBC's global headquarters – nicknamed Stephen and Stitt after former bank managers in Shanghai. A history wall of projecting photos livens up the lobby.

Cross over to the right-hand pavement into Crossrail Place. When it opens, Crossrail will boost transport connections across London, creating a speedy cross-London train line reaching out to Maidenhead in Berkshire and Shenfield in Essex. This six-storey structure – designed by Foster & Partners to resemble a liner berthed in North Dock – is more than a station, it incorporates shops, eating places and an innovative rooftop-garden (12).

Take the escalator up. The spruce lattice roof is inset with air-filled cushions, rather like a huge arc of bubble-wrap. The planting has been inspired by the international trade once transacted in the West India Docks – you stroll firstly among eastern bamboos and maples, before heading through western tree ferns, sweet gum and bananas.

Pause to enjoy the peace before taking the escalator down to Adams Plaza Bridge. Jazzy wrap-around stripes draw you along the tunnel – with a slightly space age vibe – and as you emerge, Canary Wharf DLR station to the right signals the end of your walk. But with so many festive distractions on hand you might take the chance to bag a last-minute Christmas present, try out some ice-skating acrobatics or relax in a nearby restaurant or bar.



**(10) Swiss clocks and ice rinks at Canary Wharf**



**(12) Explore the Crossrail Place rooftop garden**



**(12) Dazzling stripes at the Adams Plaza Bridge**

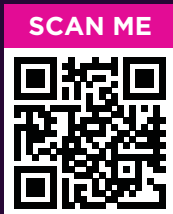
# Mulberry

Academy London Dock

A BRAND NEW 11-19 MIXED SCHOOL  
OPENING SEPTEMBER 2023  
WITH YEAR 7 STUDENTS



Visit our website for further information about the school.



**Mulberry Academy London Dock**  
10 Virginia Street, London, E1W 2AD  
☎ 020 7790 6327  
✉ [mulberrylondondock@mulberryschoolstrust.org](mailto:mulberrylondondock@mulberryschoolstrust.org)  
🐦 @MulberryDock  
🌐 [www.mulberrylondondock.org](http://www.mulberrylondondock.org)

Part of the  
**Mulberry**  
Schools Trust

# Next steps on Liveable Streets

Schemes are progressing after a review over the summer

## LIVEABLE STREETS

Work on the Liveable Streets programme, which aims to create safer, calmer and cleaner streets, is moving ahead with Barkantine and Wapping due to be completed by the end of the year.

Below is the latest information about each scheme, or you can go to [talk.towerhamlets.gov.uk/liveablestreets](http://talk.towerhamlets.gov.uk/liveablestreets) for more information.

### Barkantine

Works to widen footways to improve safety and accessibility for residents, businesses and visitors, and raised junctions to reduce vehicle speeds, will be completed by the end of the year.

### Bethnal Green

Most of the Bethnal Green scheme is complete and the area has seen a significant reduction in traffic. There are however increases in traffic where approved closures have been paused and concerns have been raised from residents, particularly for north-south journeys.

We have spoken to residents, businesses and the emergency services to assess the impact of the scheme and see how we can make changes to address concerns, whilst retaining the benefits of reduced traffic secured by the scheme. Key areas of focus are:

- Emergency service access throughout the area
- Warner Place/Squirries Street
- The closures at Pollard Row, Barnet Grove, Old Nichol Street
- Ropley Street
- Arnold Circus

### Bow

This scheme focuses on improving accessibility for residents, businesses and visitors. Works include crossing improvements on St Stephen's Road, Fairfield Road and Coborn Road, which started in early October. Improvements to Roman Road Market and two new pocket parks on Litchfield Road and Wrexham Road will start in early 2022.

There will be a delay to the closure of Skew Bridge and the Roman Road bus gate, as Transport for London has asked us to assess the impact on traffic levels and bus journey times. This type of work usually takes 8-12



Liveable Streets schemes like Bethnal Green aim to create safer, calmer and cleaner streets

months.

Other proposed closures, such as the one on Antill Road and the timed closure on Coborn Road have just been reviewed and we will provide a further update shortly.

### Brick Lane

We have reviewed the closure of Brick Lane to traffic and announced changes to the closures and some traffic arrangements at the time of going to print. These changes will start in January 2022. We are still progressing the wider elements of the overall project which include enhancements to Brick Lane and Buxton Street and improved pedestrian links between Brick Lane and Commercial Street. Two School Streets are also moving forward as part of the project.

### Old Ford Road West

Work started in November on a new one-way system as well as improvements to Vyner Road, Wadestone Street and North Globe Town Square.

The scheme to close Sewardstone Road between the junctions of Bishops Way and Approach Road, will be amended to include a camera-enforced closure to allow for improved emergency vehicle access and the potential for resident exemptions. Works to improve walking and cycling will begin in December and are due to be completed by February 2022.

The proposed timed left-turn ban from Cambridge Heath Road to Old Ford Road to restrict traffic coming through the area will now undergo further traffic modelling to assess its possible impact on the wider road system.

### Shadwell

The results for the public consultation held in the summer have been analysed and a plan is being prepared which is due to go to the council's Cabinet in December.

### Wapping

The scheme is focused along Wapping High Street and Wapping Lane and includes new widened footways to improve safety and accessibility, improved crossing at junctions and a new zebra crossing outside Wapping Station. Most of the scheme is now complete and the new resident exemption scheme for residents to pass the bus gate has started.

For more information visit [talk.towerhamlets.gov.uk/liveablestreets](http://talk.towerhamlets.gov.uk/liveablestreets)

## Did you know?

- The Liveable Streets programme consults residents first, rather than some Low Traffic Neighbourhood schemes in London, which consult after schemes are introduced.
- Nearly 50,000 people were consulted in Tower Hamlets with 9,000 responses given to help design schemes.
- Liveable Streets also invests in electric vehicle charging points, cycle hangars, pocket parks and general improvements to pavements and the street environment.
- This includes School Streets, which can involve road closures outside schools during drop-off/pick-up times to improve safety and air quality.
- More than 20 School Streets are already in place and 30 more are on the way by spring 2022, reaching most primary schools in the borough.

# Mulberry

Academy Shoreditch

Sixth Form

APPLY TODAY



Come running with us  
[www.trailfam.com](http://www.trailfam.com)

## AN EXCELLENT SIXTH FORM EXPERIENCE...

- + Win a scholarship of up to £500
  - + Visit a University in the first half term
  - + Participate in our dedicated enrichment activities every Wednesday afternoon
  - + Be part of our STEM Academy in partnership with Mercedes Formula 1
  - + Attend an international trip in 2022
  - + Secure valuable work experience
  - + Attend a University Summer School
- ...and much more



Contact our Head of Sixth Form, Ms Tamsin Scales, for further details about our outstanding offer

 To register your interest and apply to our amazing school follow the QR code

[www.mulberryacademyshoreditch.org/sixth-form-2021](http://www.mulberryacademyshoreditch.org/sixth-form-2021)

 Mulberry Academy Shoreditch . Gosset Street . London E2 6NW

 020 7920 7900  [sixthform@mulberryacademyshoreditch.org](mailto:sixthform@mulberryacademyshoreditch.org)

 @MulberryAS |   Mulberry Academy Shoreditch

Part of the  
**Mulberry**  
Schools Trust

SCAN ME





The 'No Laughing Matter' campaign kicked off with a nitrous oxide-themed Big Clean Up, where the community came together to clean up our streets

# Getting serious about tackling laughing gas

## SAFER TOGETHER

Scenes of small silver canisters thrown away on the side of the street have become a familiar sight across London, as the recreational use of nitrous oxide (or 'laughing gas', 'nox' or 'nos') is reported to be on the rise.

As well as its links to reports of antisocial behaviour, the careless discarding of the used canisters has also created a litter issue – which sparked an ongoing campaign by resident and Whitechapel Ward Panel Chair, Michelle Lowe Holder.

"There's lots of issues embroiled in people taking nitrous oxide," Michelle says. "I'm particularly interested in the waste side of things, in how we have groups of people who seem to think it's acceptable to throw things on the ground and just leave them there.

"Tower Hamlets has a lot of things

going for it but it's obviously not a great look for our streets to have these canisters pile up. It's some residents here but also people from outside the borough who come here to enjoy all that our night-time economy has to offer.

"Unfortunately, the next day it's residents like me who have to deal with the consequences of their night out and subsequent nox use.

"It's also concerning to see such a blatant disregard for our environment. We are in the midst of a climate crisis and at a time where we should all be consuming less, we're seeing a seemingly never-ending churn of these silver canisters."

Having collected the silver canisters for years as 'The Urban Forager', Michelle's work culminated in a mixed-media exhibition including a sculpture installation, film documentary and collaboration with photographers

and designers, which formed part of the London Design Festival exhibition, Material Consequences, curated by Jane Withers in 2018.

She is now working with Tower Hamlets Council on a further nitrous oxide awareness project over the coming year.

"I think we have a perfect storm here when it comes to nox," Michelle says. "Tower Hamlets has one of the youngest populations in London and also compared to the rest of the UK."

"Kids can easily order this stuff online – you can be a pretty clued-up parent and still not realise your child is getting this delivered to your house."

While taking nitrous oxide is not in itself against the law, Tower Hamlets Council introduced a borough-wide Public Spaces Protection Order (PSPO) earlier this year which makes it an offence to be involved in antisocial behaviour associated with its use.

**“ Nitrous oxide use is clearly something that resonates with people. There’s definitely a lot more attention on it now and it feels like it’s being prioritised. It will be really interesting to see how things progress over the coming months.**

## Sign up

Keep up to date with news on community safety by signing up to our e-newsletter. To sign up, simply visit [www.towerhamlets.gov.uk/signup](http://www.towerhamlets.gov.uk/signup)



## Marcus Barnett, Detective Chief Superintendent and Borough Commander for Tower Hamlets



Over the past few months there have been incidences of violence which have understandably caused concern across the community.

I want to reassure you that we remain absolutely committed in doing all we can to tackle violence and keep everyone in Tower Hamlets safe.

In recent weeks we have increased police resources in the borough and we are making many arrests, removing knives, drugs and violent offenders from our streets and we are tackling anti-social behaviour linked to nitrous oxide use.

But creating a safer borough is something we all need to work together to achieve. We need your help and support. If you have seen violence on our streets, know someone who carries a knife or heard abuse taking place behind closed doors, we need to know so that we can take action. You can be the victim's voice if they are unable to report it themselves.

Call 999 in an immediate emergency or 101 if the matter is not urgent but we need to know. You can report anonymously by calling Crimestoppers on 0800 555 111 or through local neighbourhood officers.

I know that many of you are concerned about women's safety, particularly at night, after the horrific murders of Sabina Nessa and Sarah Everard.

You will have heard about the recent conviction of a serving police officer for Sarah's murder and I understand this may impact on the trust you have in the police. We are all appalled and disgusted by the actions of her killer. He went against everything that we in the police stand for.

We are working hard to ensure that women and girls feel safe in their communities, feel confident in approaching my officers and do not fear if they are stopped by plain-clothes officers.

Officers can now use their mobile phone to video-call our control room, where a supervisor will confirm the officer's identity and policing purpose and reassure the member of the public that they are safe.



This gives enforcement officers the power to fine when necessary against those breaching the rules.

Wapping resident Julie\*, said: "I was born in Tower Hamlets and I love the sense of community here, but sadly there are a few people among us that disrupt the neighbourhood and make our lives unpleasant.

"We have regularly had groups of people gathering near my house taking laughing gas.

"When they've been hanging around nearby my 24-year-old daughter feels unsafe walking past them.

"To avoid them she has to take the long way round. It's really frustrating and upsetting that members of your family don't feel safe just a few yards from your doorstep."

Following complaints and concerns raised by residents, the council, police and local housing associations have teamed up to relaunch the 'No Laughing Matter' campaign, to tackle antisocial behaviour linked to nitrous oxide use.

The campaign kicked off with a nitrous oxide-themed Big Clean Up, where residents and volunteers teamed up with the council and the St Katharine's and Wapping Ward Panel to clean up our streets.

"I see the discarded canisters more or less every day," Julie said. "Hopefully as a community we can all come together to make positive changes."

It is now possible to report used metal canisters to the council's street cleaning team online and via the Love Your Neighbourhood app. You can also report antisocial behaviour hotspots to help us enforce our PSPO.

"Nitrous oxide use is clearly something that resonates with people," says Michelle. "There's



Michelle's art is helping to highlight the issue

definitely a lot more attention on it now and it feels like it's being prioritised. It will be really interesting to see how things progress over the coming months and years."

To find out more about the No Laughing Matter campaign and to report the silver canisters or antisocial behaviour associated with nitrous oxide use, visit [www.towerhamlets.gov.uk/NoLaughingMatter](http://www.towerhamlets.gov.uk/NoLaughingMatter)

\*Name has been changed for anonymity

See more of Michelle's work @the\_urban\_forager on Instagram.

# Mulberry

Stepney Green Maths,  
Computing and Science College

## A high performing specialist school

At Mulberry Stepney Green Maths, Computing and Science College our vision is to ensure that all our students have the opportunity to gain the qualifications and skills required for them to take their rightful place in a global community.

To us, every child matters and we work together with our families to realise our students' dreams and aspirations.

“Through exceptionally well targeted care, guidance support and an outstanding curriculum, students make outstanding progress.”

OFSTED

“Outstanding spiritual, moral and cultural development is reflected in the respect and consideration the students show.”

OFSTED

“I like the school because we are inspired to be the best we can be in everything we do.”

Year 8 Student

Visit our website or contact us to find out more about Mulberry Stepney Green Maths, Computing and Science College  
**We look forward to meeting you.**

SCAN ME



**BELIEVE  
BELONG  
BECOME**

Mulberry Stepney Green  
Maths, Computing and Science College  
Ben Jonson Road, London E1 4SD

☎ 020 7790 6361

✉ mail@stepneygreen.towerhamlets.sch.uk

🌐 [www.mulberrystepneygreen.org](http://www.mulberrystepneygreen.org)

Part of the

**Mulberry**  
Schools Trust



# Mulberry

Stepney Green Maths,  
Computing and Science College

## SIXTH FORM

**APPLY NOW**  
FOR  
**SEPTEMBER**  
**2022**



A high performing  
specialist school

# BELIEVE BECOME BELONG

“ Mulberry Stepney Green Sixth Form was the right choice for me, I have become self-motivated and driven.”

Sixth Form Student

“ Outstanding spiritual, moral and cultural development is reflected in the respect and consideration the students show.”

OFSTED

“ Through exceptionally well targeted care, guidance support and an outstanding curriculum, students make outstanding progress.”

OFSTED



Visit our website or contact us to find out more about the Sixth Form offer at Mulberry Stepney Green Maths, Computing and Science College. **We look forward to meeting you.**

SCAN ME



**RANKED**  
**TOP 1%**  
FOR A-LEVEL  
PROGRESS  
(ALPS)

**Mulberry Stepney Green**  
**Maths, Computing and Science College**  
Ben Jonson Road, London E1 4SD

☎ 020 7790 6361

✉ [mail@stepneygreen.towerhamlets.sch.uk](mailto:mail@stepneygreen.towerhamlets.sch.uk)

🌐 [www.mulberrystepneygreen.org](http://www.mulberrystepneygreen.org)



Part of the

**Mulberry**  
Schools Trust



Photos from the Port & River Archive collection showing the port at work in the first half of the 20th century. © PLA Collection/Museum of London

# Discovering the story of London's river, port and people

In each edition, we focus on a person or place that makes Tower Hamlets special

## CELEBRATING OUR BOROUGH

By **JACK STANLEY**,  
**MUSEUM OF LONDON DOCKLANDS**

Originally a 19th century, Grade I-listed quayside warehouse, the Museum of London Docklands today is a free, family-friendly museum in Poplar that tells the story of London's river, port and people.

Starting in the No. 1 Warehouse gallery on the top floor of this historic building, the museum takes visitors

on a journey through the history of the Docklands, from when London's docks complex originally opened in 1802 – and the warehouse itself was built – through to the present day, and how the docks continue to play a vital role in the lives of east Londoners.

Not only is the museum a fascinating day out and a major arts and culture destination in Tower Hamlets, but since opening in 2003, it's been a space where the local community can gather

“ **A fascinating day out and major arts and culture destination... a space where the community can gather and discuss the past, present and future of the Docklands.** ”



The museum building was originally a 19th century quayside warehouse



A trip to the museum gives visitors the chance to find out more about the history of the Docklands

for free activities, workshops and opportunities to discuss the past, present and future of the Docklands.

More than three million visitors have made the trip to the museum, which gives the chance to find out more about vitally important histories connected to the port. The galleries include London, Sugar & Slavery – the only permanent exhibition which explores the capital’s involvement in the transatlantic slave trade. The building itself is central to this history, having been built to store the sugar from the West Indian plantations where enslaved men, women and children worked.

The museum also looks at the resilience and resolve of the docks during the Blitz in the Docklands at War gallery and visitors can also take a trip back in time to Victorian London in Sailortown, the museum’s interactive recreation of the twisting, turning streets that made up this 19th century London quayside district.

For under-eights and their guardians, one of the first stops at the museum has to be the Mudlarks gallery. This free port-themed play area is the ideal, interactive introduction to the docks. You just need to pre-book online before you visit, which you can find out more

about on the museum’s website.

There are also interactive displays and activities permanently placed throughout the galleries which are free to use and loads of family events and workshops to look out for.

Open Wednesday-Sunday, 10am-5pm during term-time and seven days a week during school holidays, the museum is ideally located, being

only a short walk from Westferry and West India Quay on the DLR, or Canary Wharf on the DLR/Jubilee line.

To find out more about the Museum of London Docklands and what’s on this winter, visit [www.museumoflondon.org.uk/docklands](http://www.museumoflondon.org.uk/docklands)



## Exhibitions and displays

As well as permanent galleries, the Museum of London Docklands plays host to free temporary exhibitions and displays throughout the year.

- **Feeding Black: Community, Power & Place**, on until 17 July 2022, spotlights four of London’s African and Caribbean food businesses and their owners, exploring their essential role in untangling questions around politics, culture, heritage and resistance in an ever-changing city.

- **London: Port City**, on until 8 May 2022, looks at personal stories and pivotal moments from the Port of London’s history. From Victorian docks to modern day mega-port, visitors can find out how the port continues to impact and influence London today. Look out for the Legacies in Language wall of words where you can find out all about the phrases and expressions that originated in the docks plus, in Scents of Place, you can experience the sights, sounds and even the smells of the port!



## COMMERCIAL FINANCE MADE EASY :

We can support with all form of funding requirements.

## WHO WE ARE:

London's premium commercial finance brokers with access to exclusive products not always available from high street lenders.

## WHAT WE DO:

We work for you and find the best solutions from whole of market.

- Bridging Loans
- Business Loans
- Buy to Lets
- Commercial & Investment mortgages
- Development Finance
- Real Estate

## WHY CHOOSE US:

1. Commitment
2. Expertise
3. Flexibility
4. Transparency

## CONTACT US:



02036330845



info@alphacapitaluk.com



www.alphacapitaluk.com

Alpha Capital is an Authorised Representative of Acorn to Oaks Financial Services Ltd who are authorised and regulated by the Financial Conduct Authority. Firm reference number 486131

# Do something amazing this year by becoming a foster carer



**Local children need loving and supportive foster carers now.**

People of all different backgrounds can foster. Tower Hamlets Council offers carers lots of support including fantastic training opportunities and financial support of up to **£850 per week** (per child depending on age).



Call: 020 7364 1246

[www.fosteringtowerhamlets.co.uk](http://www.fosteringtowerhamlets.co.uk)

# Bangladesh@50 'Victory Day' celebrations planned



Naz and Bolly Flex will be among the performers at the Victory Day celebration concert on 17 December

To mark the 50th anniversary of Bangladeshi independence, a rolling programme delivered and supported by the council will conclude with a 'Victory Day' celebration concert on 17 December, one day after the official anniversary.

Music and dance acts will take to the stage at The Great Hall, Queen Mary University, including dance

troupe Naz and Bolly Flex, English Bangla pop fusion singer Nish and R&B singer Mumzy Stranger.

Five women artists – Rahima Begum, Rukia Begum, Mukta Chakravarty, Karimah Hassan and Husna Parvin – will also be displaying their work at the Art Pavilion in Mile End Park from 9-16 December in an exhibition titled 'Five:50.'

There will also be a final chance to see 'My Home, My Bari', an exhibition by local artist Rahemur Rahman, which reflects on the Bangladeshi East End experience to the legacy of independence. It is on at the Kobi Nazrul Centre until 14 December.

For tickets for the Victory Day celebration concert, visit [victorydayconcert.eventbrite.co.uk](http://victorydayconcert.eventbrite.co.uk)

## 2021 highlights

- Key moments from 1971 were discussed at 'Insight 71' online talks.
- Events exploring the 1971 Liberation War of Bangladesh, with Swadhinata Trust, Janomot newspaper and Brick Lane Circle.
- Creative youth arts projects explored the visual culture of the British Bangladeshi community in 1971.
- A public art installation was unveiled at Idea Store Whitechapel. It is on display until early 2022.
- Banglaverse Film Festival.
- Freedom and Independence Theatre Festival in association with A Season of Bangla Drama.
- Liberation Through the Lens online exhibition with support from Majority of the World Photo Agency.

To find out more, visit [www.towerhamlets.gov.uk/Bangladesh50](http://www.towerhamlets.gov.uk/Bangladesh50)

## Call out for Women's History Month submissions

Community organisation Alternative Arts is co-ordinating East London's programme for Women's History Month which runs from 1-31 March 2022.

Celebrating women artists, activists, writers, performers and community organisations, there will be a diverse programme of exhibitions and events across East London.

If you are planning a relevant exhibition, performance, event or workshop, either live or online, during March 2022, get in touch to include your activities in the Women's History Month programme which will also include events celebrating International Women's Day on 8 March 2022 and International Women's Week on 5-12 March 2022.

Send details of your event, including the venue and address with full postcode, website address and phone number, dates and time of your event, admission charges (if any) and a brief description of your activity, and an image to [info@alternativearts.co.uk](mailto:info@alternativearts.co.uk)

Participation is free.

## Holocaust Memorial Day commemorations

Holocaust Memorial Day (HMD) takes place on 27 January each year, and there will be a series of events across the borough to remember the millions of people murdered in the Holocaust, under Nazi Persecution and the genocides that followed in Cambodia, Rwanda, Bosnia and Darfur.

For further details of all events, venues and timings, visit [www.towerhamlets.gov.uk/HMD](http://www.towerhamlets.gov.uk/HMD)



Jazz and swing band The Sunshine Kings are back by popular demand

## A Winter Warmer Concert

Older residents are invited to put on their party clothes and get into the spirit of the festive season at a Winter Warmer Concert on Thursday 9 December from 2pm-4:30pm.

Taking place at the beautiful Ecology Pavilion in Mile End Park, the free event will feature top London jazz and swing band The Sunshine Kings, who are back by popular demand to provide live music and festive cheer with New Orleans, Dixieland, 20s, traditional and vintage style sounds.

Advance booking is essential. Please book by emailing [festivalsandevents@towerhamlets.gov.uk](mailto:festivalsandevents@towerhamlets.gov.uk) or calling 020 7364 7900 (10am to 3.30pm) Mon-Fri.

## Urban Makers Christmas Market

Urban Makers will return for its sixth year to host their annual festive makers' market. Fifty different designers will be on site each day selling everything from quirky and original Christmas gifts and decorations to homewares, jewellery, art, candles and accessories. There will also be a great selection of festive food and drink. All products are sustainable and ethical.

**11 and 12 December, 11am-5pm each day. Free entry.**

Ecology Pavilion, Mile End Park, Grove Road, Bow, E3 5TW

Visit [www.urbanmakers.co.uk](http://www.urbanmakers.co.uk)



Shop for sustainable and ethical festive fare

## London Docklands Singers

Join The Space Theatre for its Christmas Carol Concert 2021 in aid of Crisis, the national charity for people experiencing homelessness. **13 December (plus live stream)** The Space, 269 Westferry Road, Isle of Dogs E14 3RS

Visit [www.space.org.uk](http://www.space.org.uk)

## Bangladesh 50 – Rich Mix

Celebrate Bangladesh's 50 years of independence with music, art, poetry and film. Reflect on Bangladesh's rich variety of art and culture, both new and old, and celebrate talent in the Bangladeshi community. Explore stories and memories through talks and photography, make Putul dolls



Reflect on Bangladesh's rich art and culture, both new and old

with your little ones and dance the night away to remixed Bengali music.

**10-16 December**

Rich Mix, 35-47 Bethnal Green Road, E1 6LA

Visit [www.richmix.org.uk](http://www.richmix.org.uk)

## Santa's Grotto

Little ones can enjoy a trip to Santa's Grotto where Santa will be hosting reading sessions for small groups of visitors featuring A Christmas Carol and other classics, as well as collecting Christmas wish lists, posing for festive photos and even handing out early Christmas gifts.

**Every weekend until 17 December, 12-6pm.**

London City Island, Leamouth Peninsula, Poplar E14 OQG

## Ice Skating

Canary Wharf ice rink is lit up by more than one thousand fairy lights under a spectacular clear roof, allowing skaters to enjoy the ice come rain or shine. Set to the backdrop of Canary Wharf's twinkling towers and enchanting greenery, the ice rink is the perfect place for ice skating this season. Start the day with a serene morning skate or enjoy a post-work spin.

**Until 26 February 2022, 10am-10pm (times vary).**

Visit [www.icerinkcanarywharf.co.uk](http://www.icerinkcanarywharf.co.uk)

## Exhibitions

### Five: 50

Fifty years after the liberation of Bangladesh, five women artists share their work on the theme of freedom and independence. Accompanied by a talk and a musical event, this mixed-media exhibition includes paintings, textiles and illustrations, presenting a diverse range of creative responses to the theme. Participating artists are Rahima Begum, Mukta Chakravarty, Karimah Hassan, Husna Parvin and Rukia Ullah.

**9-16 December**

The Art Pavilion, Mile End Park E3  
Visit [www.towerhamlets.gov.uk/bangladesh50](http://www.towerhamlets.gov.uk/bangladesh50)



Works across two decades. Image courtesy of Theaster Gates

## A Clay Sermon

A Clay Sermon, a major solo exhibition by Theaster Gates (b. 1973, Chicago, USA) initiates the artist's year-long, multi-venue investigation into the material and spiritual significance of clay in craft, labour, community building, religion, colonialism and global trade. Bringing together pottery, sculpture, film and research materials, the exhibition surveys works by Gates across two decades, from his early hand-thrown pots to his large-scale Afro-Mingei sculptures, a hybrid form which combines two strands of his works: Black aesthetics and Japanese philosophy.

**Until 9 January 2022. Free entry.**

Whitechapel Gallery, 77-82 Whitechapel High Street, E17QX.

## Painting Bow

Local artist Mira Connolly loves discovering the nooks and crannies of the borough and her work is concentrated around local scenes. Mira's current work particularly focuses on the greenery of Tower Hamlets Cemetery Park which provides a wealth of ever-changing subject matter.

**Until 25 January 2022.**

Brady Arts Centre, 192-196 Hanbury Street, Whitechapel E1 5HU

## Create-a-Borough

An interactive exhibition which celebrates Tower Hamlets through a range of new, individual and creative perspectives. Innovative large-scale banners designed especially for this exhibition will showcase different aspects of our rich and diverse borough. Art Catcher is also working with the council to deliver a half-term week of hands-on activities for residents of all ages. Contribute to a flagship piece, a jumbo-sized community mosaic made from recycled bottle tops with places of significance to the lives of residents.

**13-20 February 2022**

The Art Pavilion, Mile End Park, Clinton Road E3 4QY

Visit [www.artcatcher.co.uk](http://www.artcatcher.co.uk)



Contribute to a jumbo-sized mosaic, made from recycled bottle tops

## Finding a Way

For her first solo presentation in the UK, internationally acclaimed artist Simone Fattal (b. 1942, Syria) leads visitors on a journey of transformation in a major new sculptural commission. Imagining the large, brick-lined Gallery 2 space to be a giant kiln, Fattal fills the room with five ceramic figures that embark on a spiritual and physical metamorphosis.

**Until 15 May 2022. Free entry.**

Whitechapel Gallery, 77-82 Whitechapel High Street, E17QX

Visit [www.whitechapelgallery.org](http://www.whitechapelgallery.org)

## Theatre

### The Fright Before Christmas

Six teams compete to tell six original new stories. A unique horror experience for a chilling Christmas season

**11 December**

The Space, 269 Westferry Road, Isle of Dogs E14 3RS

Visit [www.space.org.uk](http://www.space.org.uk)

### Almost Adult

Hope's leaving her childhood home in Macclesfield for the bright lights of London. I KNOW?! A job at a dinosaur themed bar. A proper grown-up housemate. Living the dream... right?

**13-15 January 2022**

**(Live stream 14 December)**

The Space, 269 Westferry Road, Isle of Dogs E14 3RS

Visit [www.space.org.uk](http://www.space.org.uk)

### The Highwayman

As bloodthirsty highwaymen stalk the land, Bess and her faithful maid, Anna, must survive a dangerous game of deceit and jealousy if they are to escape with their lives.

**25-29 January 2022**

**(Live stream 27 January)**

The Space, 269 Westferry Road, Isle of Dogs E14 3RS

Visit [www.space.org.uk](http://www.space.org.uk)



	<b>TOWER</b>
	<b>THAMES</b>
	<b>TATE</b>
	<b>TRAFALGAR</b>
	<b>GLOBE</b>
	<b>BARBICAN</b>

## Students love our House system

Students across year groups work, learn and grow together in our vertical House system. They enjoy quality House trips, competitions, sports events, fundraising on behalf of their community and much more!



## Sixth Form Leadership

Sixth Form students are fully involved in House events. They are leaders and role models, who develop impressive time management and delegation skills that are valuable for life beyond school.

 For more information about our amazing school, follow the QR code or visit [www.mulberryacademyshoreditch.org/year-6-transition](http://www.mulberryacademyshoreditch.org/year-6-transition)

[www.mulberryacademyshoreditch.org](http://www.mulberryacademyshoreditch.org)

Mulberry Academy Shoreditch . Gosset Street . London E2 6NW

020 7920 7900 [parents@mulberryacademyshoreditch.org](mailto:parents@mulberryacademyshoreditch.org)

@MulberryAS | Mulberry Academy Shoreditch

**SCAN ME**



Part of the  
**Mulberry**  
Schools Trust

Mulberry UTC  
Where learning works



Employer-led learning beyond the classroom

# OPEN EVENING

Thursday 22 January 2022  
4.30PM – 6.30PM



Year 10  
and  
Year 12

- ◆ Outstanding results
- ◆ Progression to top universities
- ◆ Unique specialist facilities
- ◆ Support from leading employers
- ◆ Access to the Mulberry STEM Academy in partnership with Mercedes-Benz Grand Prix Ltd

[www.mulberryutc.org](http://www.mulberryutc.org)

📍 64 Parnell Road London E3 2RU  
0203 137 7024 ✉ [info@mulberryutc.org](mailto:info@mulberryutc.org)  
📷 [mulberry\\_utc](https://www.instagram.com/mulberry_utc) 📺 [MulberryUTC](https://www.youtube.com/MulberryUTC)

SCAN ME



Part of the  
**Mulberry**  
Schools Trust

Mulberry 50  
School for Girls

Barts Health NHS  
NHS Trust



Bank of America  
Merrill Lynch

Goldsmiths  
UNIVERSITY OF LONDON

National  
Theatre



# Help shape the future of your borough

## COUNCIL NEWS

Did you know that your views help shape proposals, projects and policies that can benefit the community? To get involved, visit [talk.towerhamlets.gov.uk](http://talk.towerhamlets.gov.uk).

The council is currently consulting on a range of initiatives which you can have your say on, ranging from preventing suicide to improving local markets.

### Markets Improvement Plan 2022-2027 – respond by Sunday 12 December 2021

Businesses, residents, traders and community groups are being invited to have their say on the council's Draft Markets Improvement Plan.

In summer 2021 the council carried out a survey on its ten street markets and received over 700 responses from businesses, residents and traders.

The results of this survey have informed the Draft Markets Improvement Plan, which aims to improve the customer experience and provide more opportunities for businesses.

### Suicide Prevention Draft Strategy 2022-25 – respond by Monday 13 December 2021

Suicide prevention is everyone's business. The Tower Hamlets Suicide Prevention Strategy 2022-2025 aims to reduce the rates of suicide and self-harm and establish supportive environments for people affected by suicide.

Help shape the strategy by sharing your views.

### Options for leisure services in Tower Hamlets – respond by Monday 3 January 2022

Residents, schools, colleges, sports clubs, voluntary groups and community groups are being called to have their say in a new consultation on the future of leisure services in the borough.

Those taking part in the survey will be asked for their views on a range of issues including journey times to centres, levels of investment in the service and whether the leisure services and centres in the borough are fit for purpose.

### Whitechapel Road Improvements Programme – respond by Sunday 9 January 2022

The council is working to deliver a range of improvements to Whitechapel Road, including improved pavements, street lighting, and street furniture, upgraded market stalls for a better trading and shopping environment, and a new vision for the long-term success of Whitechapel Market.

Your views and ideas are crucial to the development of designs that meet the needs of the community.

Share your thoughts through an online consultation, open until 9 January 2022, or come along to one of the drop-in sessions at Whitechapel Idea Store, to meet the project team and see the proposals.

### Electric vehicle (EV) charging in Tower Hamlets – respond by February 2022

As part of the electric vehicle delivery plan (2021-2025), the council will install a network of 1,100 residential charging points across the borough by 2025, ensuring most residents are no longer than a 3-minute walk from a residential charging point.



Cllr Kahar Chowdhury, Cabinet Member for Highways and Public Realm, at a local EV charging point

Take part in this consultation to request a charging point near you.

### Air Quality Action Plan 2022-2027 – respond by Tuesday 22 February 2022

The council is currently updating and enhancing its Air Quality Action Plan and proposing new measures to improve air quality in the borough.

Have your say on how poor air quality can be better tackled on a local level.

## Free boiler upgrades for home owners

Tower Hamlets Council is running its award winning Boiler Replacement Programme, a free scheme to replace old and inefficient gas boilers.

If you have a boiler changed through the Programme, you may also be eligible for replacing faulty radiators, old heating controls, draught proofing and insulation.

To qualify you must be in receipt of a qualifying benefit and live in a property you own or with a family member who owns and also lives at the property. The existing boiler will also need to be checked for eligibility.



**0800 508 8364**  
[www.towerhamlets.gov.uk/energy](http://www.towerhamlets.gov.uk/energy)

# Qorshe hawleedka sinnaan la'aanta BAME oo la siiyay xoojin £1.5m ah

## £1.5m pledged to tackle – page 17

### HARMONY BENGALI & SOMALI NEWS

In ka badan £1.5m oo lacag maalgelin ah ayaa loo isticmaali doonaa in gacan looga geysto fulinta qorshe hawleed wax looga qabanayo sinnaan la'aanta isla markaana Tower Hamlets looga dhigayo degmo ka soo horjeeda cunsuriyadda, kadib markii Golaha Xukuumadda ee Tower Hamlets ay taageereen qorshaha.

Iyada oo qayb ka ah kharash gareynta, £500,000 ayaa loo qoondayn doonaa wax ka qabashada sinnaan la'aanta xagga caafimaadka ah iyo in ka badan £170,000 ayaa loo isticmaali doonaa barnaamijyada

hoggaaminta bulshada. £318,000 ayaa loo qoondayn doonaa in lagu taageero carruurta iyo dhalinyarada, £200,000-na waxaa loo qoondayn doonaa abuurista fursadooyin kala duwan oo shaqo ah.

Cllr Asma Begum, oo ah Gudoomiyada Guddiga iyo Ku-xigeenada Duqa Degmada ee carruurta, Adeegga Dhalinyarada, Waxbarashada iyo Sinnaanta ayaa tiri: “Waan ku faani karnaa inaan samaynayno ballan-qaad lacageed oo muhiim ah kaas oo gacan ka geysan doona in aan diiradda saarno wax ka qabashada arrimaha sii xaddidaya fursadaha ay heli karaan dad badan oo naga mid ah.”

# Shan shakhsiyad oo lagu abaalmariyey Xoriyadda Degmada dhiiragelin ahaan

## Inspirational five awarded Freedom of the Borough – page 17

Shan qof oo sannado badan u adeegayey Degmada Tower Hamlets ayaa la guddoonsiiyey maamuuska ugu sarreeya ee degmada – Xorriyadda Degmadda.

Xildhibaanadu waxay si aqlabiyad ah ugu codeeyeen in Xorriyadda Degmada lagu abaalmariyo Sufia Alam, Jim Fitzpatrick, Sister Christine Frost FCJ, Sir George Iacobescu CBE iyo Abdul Aziz Sardar, taas oo lagu guddoonsiiyey xaflad gaar ah oo lagu qabtay Tower of London bishii Oktoobar.

Waa markii labaad oo muddo labaatano sano gudahood ah oo la bixiyo abaalmariinta Xorriyadda Degmada, iyadoo markii ugu dambaysay oo ahayd sanadkii 2018 la siiyey Taliye John Ludgate oo shaqada ka fadhiistay, kaas oo 22 sano ahaa ku-xigeenka Sarreeyaha Guuto ee Tower Hamlets.

Guddoomiyaha Golaha Shacabka, Cllr Mohammed Ahab Hossain ayaa yiri:

“Waxaan ku faraxsanahay in xildhibaanadu ay si aqlabiyad leh ugu codeeyeen in la guddoonsiiyo Xorriyadda mid kasta oo ka mid ah musharxiinta waxaan ugu hambalyeynayaa sida ay ugu guuleysteen maamuuska ugu sarreeya ee degmadayada.”

# Natiijooyinka aftida Spitalfields

## Spitalfields referendums results – page 7

Laba afti oo uu u baahnaa sharciga deegaanka ee 2011 si loo go'aamiyo in qorshaha xaafadda ee Spitalfields la isticmaalo iyo in kale marka la go'aaminayo codsiyada qorshaynta ee aagga ayaa la qabtay bisha Noofambar, aftiyadaas oo ay ka soo baxeen natiijooyin kala duwan.

Aftida dadka deegaanka, codbixiyayaashu waxay ku taageereen isticmaalka qorshahan iyadoo 298 cod ay taageereen 252 codna aysan taageerin, laba codna ay

xumaadeen, laakiin aftidii ganacsatada, codbixiyayaashu waxay diideen isticmaalka qorshahan iyadoo 70 cod ay taageereen 18 codna aysan taageerin.

Maadaama keliya mid ka mid ah aftida la meel mariyey, golaha ayaa hadda go'aan ka gaari doona mustaqbalka Qorshaha Xaafadda Spitalfields. Faahfaahin dheeraad ah ayaa lagu daabici doonaa www.towerhamlets.gov.uk/neighbourhood-planning

# হোয়াইটচ্যাপলের জন্য নতুন এক ইতিহাস

## A new history for Whitechapel – page 7

টাওয়ার হ্যামলেটস কাউন্সিল এবং ট্রান্সপোর্ট ফর লন্ডন (টিএফএল) হোয়াইটচ্যাপল রোড এলাকার উন্নয়নে ৯ দশমিক ৩ মিলিয়ন পাউন্ড সরকারী অনুদান বা তহবিল নিশ্চিত করতে সক্ষম হয়েছে। এর ফলে উপকৃত হবে হোয়াইটচ্যাপল এলাকা, যা এই এলাকার জন্য নতুন এক ইতিহাস হয়ে থাকবে। হোয়াইটচ্যাপল রোড ইন্স্টিটিউটে প্রোগ্রাম বা উন্নয়ন কর্মসূচির অধীনে নিউ রোড এবং ভ্যালেস রোড জংশন থেকে ক্যামব্রিজ রোড ও সিডনী স্ট্রিট পর্যন্ত অংশের পেভমেন্টস্, স্ট্রিটলাইটস ও পাবলিক ল্যান্ডস্কাপের উন্নয়ন করা ছাড়াও মার্কেট স্টলগুলোর আধুনিকায়ন করা হবে।

ডেপুটি মেয়র এবং কেবিনেট মেম্বর ওয়ার্ক, ইকোনোমিক প্রোগ্রাম এন্ড ফেইথ, কাউন্সিলর মতিন উজ-জামান বলেন, হোয়াইটচ্যাপল রোড ইন্স্টিটিউটে প্রকল্প শুধুমাত্র স্থানীয় অর্থনীতির জন্য সুফল বয়ে আনবে না, এটি স্থানীয় এলাকার বৈচিত্র্য ও স্বাভাবিকতাকেও তুলে ধরবে।

তিনি বলেন, আমাদের রিজেনারেশন টিম এবং টিএফএল সহকর্মীদের কঠোর পরিশ্রমের ফলে এই তহবিল নিশ্চিত হওয়ায় আমি খুবই আনন্দিত।

ক্রসরেল হিসেবে পরিচিত এলিজাবেথ লাইন এর আগমন এবং পুরনো রয়েল লন্ডন হাসপাতাল ভবনে ২০২২ সালে টাউন হলের স্থানান্তরের ফলে হোয়াইটচ্যাপল এলাকায় যে অভূতপূর্ব চাঞ্চল্য সৃষ্টি হবে, সেই চাঞ্চল্যে সর্বশেষ সংযোজন বা প্রণোদনা হচ্ছে

৯.৩ মিলিয়ন পাউন্ডের বিশেষ তহবিল নিশ্চিতকরণ। এ প্রসঙ্গে মেয়র জন বিগস বলেন, হোয়াইটচ্যাপল লাইফ সায়েন্স ক্লাস্টার তৈরী করতে কুইন মেরি ইউনিভার্সিটি এবং বার্টস হেলথ এনএইচএস ট্রাস্ট এর মধ্যকার অংশীদারিত্ব টাওয়ার হ্যামলেটস এর জন্য একটি বিশাল অর্জন। এর ফলে আমাদের বাসিন্দারা শুধুমাত্র উন্নত চিকিৎসা ও স্বাস্থ্যসেবার গবেষণার ফলাফল থেকেই উপকৃত হবে না, এই ক্লাস্টার জীবনকে বদলে দেয়ার মত অর্থনৈতিক সুযোগসমূহও তৈরী করবে।

মেয়র বলেন, হোয়াইটচ্যাপলকে লাইফ সায়েন্স বা জীবন বিজ্ঞানের জন্য একটি প্রধানতম কেন্দ্র হিসেবে গড়ে তোলার ফলে উল্লেখযোগ্য নতুন বিনিয়োগ ও ব্যবসার সুযোগসমূহের জন্য এই এলাকা আকর্ষণীয় হয়ে উঠবে এবং সবচেয়ে গুরুত্বপূর্ণ হচ্ছে, লাইফ সায়েন্সে ক্যারিয়ার বা পেশাজীবন গড়ে তোলার সুবর্ণ সুযোগ পাবে আমাদের তরুণ প্রজন্ম।

তিনি আরো বলেন, হোয়াইটচ্যাপল হচ্ছে ইতিহাস-ঐতিহ্যে পরিপূর্ণ একটি জনপদ, যা এই এলাকাকে লন্ডনের সবচেয়ে বিখ্যাত জনপদগুলোর মধ্যে একটি করে তুলেছে। নতুন এলিজাবেথ লাইন স্টেশন, ঐতিহাসিক রয়েল লন্ডন হাসপাতালকে পুনঃসংস্কার করে নতুন টাউন হলে রূপান্তর এবং বিশ্বেশ্বরের লাইফ সায়েন্স কেন্দ্রের মত বৃহৎ আকারের উন্নয়ন প্রকল্পগুলো বাস্তবায়ন করে আমরা এখন নতুন ইতিহাস তৈরী করছি।



L-R Sister Christine Frost fcj, Sufia Alam, Speaker of the Council, Cllr Mohammed Ahab Hossain, Mayor John Biggs, Sir George Iacobescu CBE, Abdul Aziz Sardar and Jenny Symmons

# ৫ জন পেলেন ‘ফ্রিডম অব দ্যা বারা’ খেতাব

## Inspirational five awarded Freedom of the Borough - page 17

কয়েক দশক ধরে টাওয়ার হ্যামলেটসকে নিরন্তর সেবা প্রদানকারী ৫ জন অনুপ্রেরণাদায়ী ব্যক্তিকে বারার সর্বোচ্চ সম্মান ‘দ্যা ফ্রিডম অব দ্যা বারা’ খেতাব প্রদান করা হয়েছে। সম্মানসূচক এই খেতাব প্রদান উপলক্ষে অক্টোবরে বিশেষ এক অনুষ্ঠানের আয়োজন করা হয়েছিলো ঐতিহাসিক টাওয়ার অব লন্ডনে।

গত ২০ বছরে দ্বিতীয়বারের মত প্রদান করা হলো ‘ফ্রিডম অব দ্যা বারা’ এওয়ার্ড। কাউন্সিলররা সর্বসম্মতিক্রমে যে ৫ জনকে সর্বোচ্চ সম্মানসূচক এই খেতাবের জন্য চূড়ান্তভাবে মনোনীত করেন, তারা হলেন সুফিয়া আলম, জিম ফিৎজপ্যাট্রিক, সিস্টার ক্রিস্টিন ফরেষ্ট এফসিজে, স্যার জর্জ ইকোবেসকু সিবিই এবং আব্দুল আজিজ সরদার।

সর্বশেষ ২০১৮ সালে এই এওয়ার্ড দেওয়া হয়েছিলো বারা কমান্ডার (অব.) জন লুডগেটকে, যিনি একটানা ২২ বছর টাওয়ার হ্যামলেটসের ডেপুটি লেফটেন্যান্ট হিসেবে দায়িত্ব পালন করেন।

স্পিকার অব দ্যা কাউন্সিল, কাউন্সিলর মোহাম্মদ আহবাব হোসেন বলেন, পুরস্কারের অনন্য গুরুত্ব সম্পর্কে ভালো জ্ঞান যাদের রয়েছে তাদের সাথে পর্যাপ্ত আলোচনার পর আমরা যোগ্য প্রার্থীদের চূড়ান্ত তালিকা করতে সম্মত হই। এই ফ্রিডম অব দ্যা বারা’র এওয়ার্ডের জন্য মনোনীত প্রত্যেক প্রার্থীকে কাউন্সিলররা সর্বসম্মতভাবে ভোট দেয়ার আমি তাদের প্রতি কৃতজ্ঞ। একই সাথে বারার সর্বোচ্চ সম্মান যারা পেয়েছেন, তাদেরকেও অভিনন্দন জানাচ্ছি।



**My Home My Bari** Final chance to see 'My Home, My Bari', an exhibition by local artist Rahemur Rahman, which is on at the Kobi Nazrul Centre until 14 December.

## ‘পঞ্চাশে বাংলাদেশ’ এর বিজয় দিবস উদযাপন

### Bangladesh@50 ‘Victory Day’ celebrations planned – page 37

বাংলাদেশের স্বাধীনতার ৫০তম বার্ষিকী উদযাপনে টাওয়ার হ্যামলেটস কাউন্সিলের উদ্যোগে ও সহযোগিতায় ৯ মাসব্যাপি নানা কর্মসূচির সমাপ্তি ঘটবে বাংলাদেশের বিজয় দিবসের পরদিন ১৭ ডিসেম্বর ‘বিজয় দিবস কনসার্ট’ এর মধ্য দিয়ে।

পূর্ব লন্ডনের কুইন মেরি ইউনিভার্সিটির গ্রেট হলে আয়োজিত ভিক্টোরি ডে কনসার্টে অংশ নেবে নাচের দল বলি ফ্লেক্স, ইংলিশ-বাংলা পপ ফিউশন সিঙ্গার নিশ এবং আরএভি সিঙ্গার মামজি স্ট্র্যাঞ্জার সহ অসংখ্য শিল্পী ও দল।

এছাড়া ৯ ডিসেম্বর থেকে ১৬ ডিসেম্বর মাইল এন্ড পার্কের আর্ট প্যাভিলিয়নে অনুষ্ঠিত হবে ৫ নারী শিল্পী - রহিমা বেগম, রুকিয়া বেগম, মুক্তা চক্রবর্তী, করিমা হাসান ও হুসনা পারভীন এর ‘ফাইভ:৫০’ শীর্ষক যৌথ প্রদর্শনী।

হ্যানবারি স্ট্রিটে অবস্থিত কবি নজরুল সেন্টারের এখন চলছে স্থানীয় শিল্পী রাহিমুর রহমানের বিশেষ এক্সিবিশন ‘মাই হোম - মাই বাড়ি’। এই প্রদর্শনীতে পূর্ব লন্ডনে বাংলাদেশের স্বাধীনতার

উত্তরাধিকার অভিবাসী বাংলাদেশীদের অভিজ্ঞতার প্রতিফলন ঘটিয়েছেন শিল্পী। সবার জন্য উন্মুক্ত এটি চলবে ১৪ ডিসেম্বর পর্যন্ত।

‘বাংলাদেশ এট ফিফটি’ শিরোনামে নয় মাসব্যাপি নানা কর্মসূচির উল্লেখযোগ্য কয়েকটি হচ্ছে-

- ১৯৭১ সালের ঐতিহাসিক ঘটনা ও সময়ের ওপর স্বাধীনতা ট্রাস্ট, সত্ত্বাহিক জনমত এবং ব্রিক লেন সার্কলের অনলাইন উপস্থাপনা ‘ইনসাইট ৭১’
  - সৃজনশীল তরুণদের শিল্পকর্মের মধ্য দিয়ে ১৯৭১ এর ব্রিটিশ বাংলাদেশী কমিউনিটির সংস্কৃতির অন্বেষণ ও উপস্থাপন
  - হোয়াইটচাপল আইডিয়া স্টোর উন্মুক্ত শিল্প স্থাপনা স্থাপন, ‘বাংলা’ বর্ণমালা দিয়ে তৈরী এই শিল্প কর্ম ২০২২ সালের প্রথম দিক পর্যন্ত প্রদর্শিত হবে
  - বাংলাভার্স ফিল্ম ফেস্টিভ্যাল নামের বিশেষ চলচ্চিত্র উৎসবের আয়োজন
  - ‘ফ্রিডম এন্ড ইন্ডিপেন্ডেন্স থিয়েটার ফেস্টিভ্যাল’ নামে এবারের বাংলা নাট্যসংস্রবের আয়োজন
- বাংলাদেশ@ফিফটি সম্পর্কে বিস্তারিত তথ্য জানতে ভিজিট করুন: [www.towerhamlets.gov.uk/Bangladesh50](http://www.towerhamlets.gov.uk/Bangladesh50)

## জাতিগত বৈষম্য মোকাবেলায় ১.৫ মিলিয়ন পাউন্ড বিনিয়োগ BAME inequality action plan given £1.5m boost – page 17

একটি বর্ণবাদ বিরোধী এবং অধিকতর ন্যায়সঙ্গত টাওয়ার হ্যামলেটস গড়ে তুলতে নতুন একটি ব্ল্যাক, এশিয়ান এন্ড মাইনোরিটি এথনিক ইনইকুয়েলিটিজ কমিশন এ্যাকশন প্ল্যানকে অনুমোদন দিয়েছে কাউন্সিলের কেবিনেট। এই এ্যাকশন প্ল্যান বা কর্মপরিকল্পনা বাস্তবায়নে ১ দশমিক ৫ মিলিয়ন পাউন্ডেরও বেশি তহবিল বরাদ্দের সিদ্ধান্ত নেয়া হয়।

ব্যয়ের অংশ হিসেবে, স্বাস্থ্য বৈষম্য মোকাবেলায় ৫ লাখ পাউন্ড এবং কমিউনিটি লিডারশীপ প্রোগ্রামসমূহের জন্য ১ লাখ ৭০ হাজার পাউন্ডেরও বেশি তহবিল বরাদ্দ করা হবে। এছাড়া শিশু ও তরুণ সম্প্রদায়ের সহায়তার জন্য ৩ লাখ ১৮ হাজার পাউন্ড এবং বিভিন্ন ধরনের কর্মসংস্থান বিষয়ক উদ্যোগের জন্য আরো ২ লাখ পাউন্ড বরাদ্দ করা হবে।

কমিশনের চেয়ার এবং ডেপুটি মেয়র ফর চিলড্রেন, ইয়ুথ সার্ভিসেস, এডুকেশন এন্ড ইকুয়েলিটিজ, কাউন্সিলর আসমা বেগম বলেন, এমন একটি কর্মপরিকল্পনা বাস্তবায়নে উল্লেখযোগ্য পরিমাণ অর্থায়নের প্রতিশ্রুতি দিতে পারায় আমরা গর্বিত। আমাদের অনেক বাসিন্দার জন্য সুযোগ সুবিধাকে সীমিত করে এমন সকল সমস্যা সমাধানে নিরলস প্রচেষ্টা চালিয়ে যাওয়ার ক্ষেত্রে এই তহবিল অনেক সহায়ক হবে।

## ওয়েস্টফেরি প্রিন্টওয়ার্কস প্ল্যানিং এপ্লিকেশনের অনুমোদনের সিদ্ধান্ত বাতিল Government U-turn on Westferry Printworks decision – page 7

বারার আইল অব ডগস এর বিতর্কিত ওয়েস্টফেরি প্রিন্টওয়ার্কস উন্নয়ন সংক্রান্ত প্ল্যানিং এপ্লিকেশন বাতিল করা হয়েছে। সরকারের নবনियুক্ত ইন্সপেক্টর গভ শুরুবার এই প্ল্যানিং এপ্লিকেশনটি বাতিল করে দেন।

গত বছর কাউন্সিলের বিরোধিতা সত্ত্বেও সরকারের সাবেক হাউজিং সেক্রেটারী রবার্ট জেনরিক এটি অনুমোদন দিয়েছিলেন। বারার স্থানীয় উন্নয়ন পরিকল্পনা এবং বাসিন্দাদের ইচ্ছার বিরুদ্ধে যাওয়ার কারণেই টাওয়ার হ্যামলেটস কাউন্সিল এই উন্নয়ন প্রকল্পকে অনুমোদন দেয়ার মূল সিদ্ধান্তকে চ্যালেঞ্জ করেছিলেন।

এ প্রসঙ্গে কাউন্সিলের কেবিনেট মেম্বার ফর এনভায়রনমেন্ট এন্ড প্ল্যানিং, কাউন্সিলর আসমা ইসলাম বলেন, আমরা আনন্দিত যে, অনেকগুলো মাস এবং দুটি গণ তদন্ত শেষে ইন্সপেক্টর এবং নতুন সেক্রেটারী অব স্ট্যাট উভয়েই কাউন্সিলের এই দৃষ্টিভঙ্গির প্রতি একমত হয়েছেন যে বড় ধরনের প্রকল্পের অনুমোদন প্রত্যাখ্যান করা উচিত।

## স্পিটালফিল্ডস রেফারেন্ডাম এর ফলাফল Spitalfields referendums results – page 7

প্ল্যানিং এপ্লিকেশন সম্পর্কে সিদ্ধান্ত নেয়ার ক্ষেত্রে স্পিটালফিল্ডস এলাকার জন্য নেইবারহুড প্ল্যান ব্যবহার করা হবে কিনা সেসম্পর্কে সিদ্ধান্ত নিতে ২০১১ সালের লোকালিজম অ্যাক্টের আওতায় দুটি গণভোট গত নভেম্বর মাসে অনুষ্ঠিত হয়। এই গণভোট দুটিতে পৃথক ফল পাওয়া যায়। বাসিন্দাদের জন্য আয়োজিত গণভোটে নেইবারহুড প্ল্যান ব্যবহারের পক্ষে সংখ্যাগরিষ্ঠ ভোটার ভোট প্রদান করেন। পঞ্চমস্তরে ব্যবসায়ীদের জন্য আয়োজিত গণভোটে বেশির ভাগ ভোট পড়ে প্রস্তাবের বিপক্ষে।

দুটি গণভোটের মধ্যে একটি গণভোট পাস হওয়ায়, এখন স্পিটালফিল্ডস নেইবারহুড প্ল্যান সম্পর্কে কাউন্সিলই সিদ্ধান্ত নেবে। এব্যাপারে বিস্তারিত তথ্য [www.towerhamlets.gov.uk/neighbourhoodplanning](http://www.towerhamlets.gov.uk/neighbourhoodplanning) - এই ওয়েবসাইটে প্রকাশ করা হবে।

## মাদক বিরোধী অভিযানে বিপুল অর্থ ও মাদক উদ্ধার Cash and Class A drugs seized – page 7

সম্প্রতি টাওয়ার হ্যামলেটসে সাতাশি অভিযান চালিয়ে দুই কিলোগ্রাম ক্লাস এ ড্রাগ বা মাদক পণ্য, ১২০ হাজার পাউন্ড নগদ অর্থ এবং মানি লন্ডারিংয়ের সাথে যুক্ত আরো প্রায় ১ লাখ পাউন্ডের বেশি মূল্যের সম্পদ/সামগ্রী জব্দ করা হয়। টাওয়ার হ্যামলেটস এবং হ্যাকনি বারায় ড্রাগ ডিলিং অর্থাৎ মাদক কেনাবেচা, মাদকের ব্যবহার এবং মাদক-সংশ্লিষ্ট অপরাধ মোকাবেলা চলমান ‘অপারেশন কন্টিনিউম’ এর অংশ হিসেবে এই বিশেষ অভিযান চালানো হয়েছিলো। এসময় ১৯ জনকে গ্রেফতারও করা হয়।

কমিউনিটি সেফটি বিষয়ক কেবিনেট মেম্বার, কাউন্সিলর সিরাজুল ইসলাম বলেন, ‘অপারেশন কন্টিনিউম’ এর মাধ্যমে আমরা মাদকের সাথে জড়িত প্রতি এই বার্তাই পাঠাচ্ছি যে, এটা আমাদের এই বারায় কখনোই সহ্য করা হবে না।’



New young mayor and deputies (left-to-right): Mohsen Ali, Ablah Chazhiyattiri Peedikayil, Tahmid Hussien (Young Mayor), Rhianna Fowell, Intisar Al-Alam, Hafizur Rahman.

## নতুন ইয়াং মেয়র ও ৫ ডেপুটি মেয়র নির্বাচিত Six thousand elect new young mayor and deputies – page 9

অক্টোবরে সত্ত্বাহব্যাপি অনুষ্ঠিত নির্বাচনের মধ্য দিয়ে বারার নতুন ইয়াং মেয়র ও ডেপুটি মেয়রগণ নির্বাচিত হয়েছেন। নবনির্বাচিত ইয়াং মেয়র ১৬ বছর বয়সী তাহমিদ হোসেন এবং ৫ জন ডেপুটি মেয়র আগামী ২ বছর বারার তরুণ জনগোষ্ঠীর কণ্ঠস্বর হিসেবে দায়িত্ব পালন করবেন।

এসময় তারা স্থানীয় কিশোর তরুণ বয়সীদের সমস্যা ও সম্ভাবনা এবং তাদের উদ্বেগের বিষয়গুলো জানতে ও যথাযথভাবে তা তুলে ধরতে তাদের সাথে ঘনিষ্ঠভাবে কাজ করবেন। এবারের নির্বাচনে প্রতিদ্বন্দ্বিতা করেন মোট ১৪ জন প্রার্থী। এদের মধ্য থেকে হাফিজুর রহমান, মোহসেন

আলী, আবলা শাজিয়াত্তিরি পিডিকালি, ইন্ডিজার আল-আলম এবং রিয়ানা ফয়েল ডেপুটি ইয়াং মেয়র নির্বাচিত হয়েছেন। ফলাফল ঘোষণার পর বিদায়ি ইয়াং মেয়র জামি বারি তাঁর উত্তরসূরি তাহমিদদের গলায় অফিসিয়াল চেইন পরিয়ে দেয়ার মাধ্যমে দায়িত্ব হস্তান্তর করেন।

### সাবজ্কাইব করুন বাংলা নিউজলেটার

কাউন্সিল তার বাসিন্দাদের জন্য বাংলা ভাষায় পাশ্চিক ই-নিউজলেটার প্রকাশ করছে। নিয়মিত এই বাংলা নিউজলেটার ইমেইলে পেতে [www.towerhamlets.gov.uk/signup](http://www.towerhamlets.gov.uk/signup) - এই ওয়েবসাইটে গিয়ে আজই এটি সাবজ্কাইব করুন।



# KNOW YOUR COUNCIL

## BETHNAL GREEN



**Mohammed Ahab Hossain (LAB)**

Tel: 07988 641407  
Email: mohammed.hossain@towerhamlets.gov.uk



**Sirajul Islam\* (LAB)**

Tel: 07931 708308  
Email: sirajul.islam@towerhamlets.gov.uk  
@CLrSirajIslam



**Eve Josephine McQuillan (LAB)**

Tel: 07594 828420  
Email: eve.mcquillan@towerhamlets.gov.uk

## BLACKWALL & CUBITT TOWN



**Ehtasham Haque (LAB)**

Tel: 07943 999681  
Email: ehtasham.haque@towerhamlets.gov.uk  
@ehtashamulhaque



**Mohammed Iqbal Morshed Pappu (LAB)**

Tel: 07775 689621  
Email: mohammed.pappu@towerhamlets.gov.uk



**Candida Ronald\* (LAB)**

Tel: 07949 164104  
Email: candida.ronald@towerhamlets.gov.uk

## BOW EAST



**Amina Ali (LAB)**

Tel: 020 7987 3014  
Email: amina.ali@towerhamlets.gov.uk  
@AminaAliLabour



**Rachel Blake\* (LAB)**

Tel: 020 7364 1378  
Email: rachel.blake@towerhamlets.gov.uk  
@RNBlake



**Marc Francis (LAB)**

Tel: 07973 815 272  
Email: marc.francis@towerhamlets.gov.uk

## BOW WEST



**Asma Begum\* (LAB)**

Tel: 07946 292712  
Email: asmak.begum@towerhamlets.gov.uk  
@cllrasmabegum



**Val Whitehead (LAB)**

Tel: 07879 616155  
Email: val.whitehead@towerhamlets.gov.uk  
@valjwhitehead

## BROMLEY NORTH



**Zenith Rahman (LAB)**

Tel: 07961 865923  
Email: zenith.rahman@towerhamlets.gov.uk



**Dan Tomlinson (LAB)**

Tel: 07501 461113  
Email: dan.tomlinson@towerhamlets.gov.uk  
@Dan\_Bromley\_N

## MILE END



**David Edgar (LAB)**

Tel: 07958314 844  
Email: david.edgar@towerhamlets.gov.uk



**Asma Islam\* (LAB)**

Tel: 07538 325176  
Email: asma.islam@towerhamlets.gov.uk  
@THLP\_ASMA



**Puru Miah (LAB)**

Tel: 07846 890823  
Email: puru.miah@towerhamlets.gov.uk  
@th\_puru

## POPLAR



**Sufia Alam (LAB)**

Tel: 07506 473136  
Email: sufia.alam@towerhamlets.gov.uk  
@SufiaAlam1

## SHADWELL



**Rabina Khan (LIB DEM)**

Tel: 07944 790383  
Email: rabina.khan@towerhamlets.gov.uk  
@RabinaKhan



**Mohammad Harun Miah (ASPIRE)**

Tel: 07949 051295  
Email: harunmiahcldr@outlook.com

## SPITALFIELDS & BANGLATOWN



**Shad Uddin Chowdhury (LAB)**

Tel: 07737 337148  
Email: shad.chowdhury@towerhamlets.gov.uk  
@shadchowdhury2



**Leema Omar Qureshi (LAB)**

Tel: 07916 305953  
Email: leema.qureshi@towerhamlets.gov.uk  
@leemaqureshi

## ST DUNSTAN'S



**Dipa Das (LAB)**

Tel: 07488 299131  
Email: dipa.das@towerhamlets.gov.uk  
@DipaDas01



**Ayas Miah (LAB)**

Tel: 07961 566066  
Email: ayas.miah@towerhamlets.gov.uk  
@ayasmiah3

Tower Hamlets Council has a system of governance in which the elected mayor, **John Biggs** (right), has personal responsibility and executive powers. Mayor Biggs is responsible for determining and delivering a wide range of policies and priorities. He is advised by his cabinet of councillors and by council officers.



**\* The members of the Cabinet are:**

**Cllr Asma Begum** Deputy Mayor and Cabinet Member for Children, Youth Services, Education and Equalities (Statutory Deputy Mayor)  
**Cllr Rachel Blake** Deputy Mayor and Cabinet Member for Adults, Health and Wellbeing  
**Cllr Motin Uz-Zaman** Deputy Mayor and Cabinet Member for Work, Economic Growth and Faith  
**Cllr Sirajul Islam** Cabinet Member for Community Safety  
**Cllr Danny Hassell** Cabinet Member for Housing  
**Cllr Candida Ronald** Cabinet Member for Resources and the Voluntary Sector

**Cllr Sabina Akhtar** Cabinet Member for Culture, Arts and Sports  
**Cllr Asma Islam** Cabinet Member for Environment and Planning  
**Cllr Mufeedah Bustin** Cabinet Member for Social Inclusion (job share post as part of Social Inclusion and Public Realm portfolio)  
**Cllr Kahar Chowdhury** Cabinet Member for Highways and Public Realm (job share post as part of Social Inclusion and Public Realm portfolio)

**BROMLEY SOUTH**



**Danny Hassell\* (LAB)**

Tel: 07807 732795  
 Email: danny.hassell@towerhamlets.gov.uk  
 @dannyhassell



**Helal Uddin (LAB)**

Tel: 07939 998625  
 Email: helal.uddin@towerhamlets.gov.uk

**CANARY WHARF**



**Kyrsten Perry (LAB)**

Tel: 07977 049094  
 Email: kyrsten.perry@towerhamlets.gov.uk



**Andrew Wood (IND)\***

Tel: 07710 486873  
 Email: cllrandrewwood@gmail.com  
 @Andrewwood17

\* Independent Member of the Conservative Group

**ISLAND GARDENS**



**Mufeedah Bustin\* (LAB)**

Tel: 07759 905377  
 Email: mufeedah.bustin@towerhamlets.gov.uk  
 @MufeedahB



**Peter Golds (CON)**

Tel: 020 7364 4830  
 Email: councillorpetergoldsg@gmail.com  
 @going4goldsg

**LANSBURY**



**Rajib Ahmed (LAB)**

Tel: 07958 740097  
 Email: rajib.ahmed@towerhamlets.gov.uk



**Kahar Chowdhury\* (LAB)**

Tel: 07732 686208  
 Email: kahar.chowdhury@towerhamlets.gov.uk  
 @KaharChowdhury



**Bex White (LAB)**

Tel: 07434 989611  
 Email: bex.white@towerhamlets.gov.uk  
 @BexWhiteTH

**LIMEHOUSE**



**James Robert Venables King (LAB)**

Tel: 07736 371160  
 Email: james.king@towerhamlets.gov.uk  
 @jrvking

**ST KATHARINE'S & WAPPING**



**Denise Jones (LAB)**

Tel: 07494 494482  
 Email: denise.jones@towerhamlets.gov.uk



**Abdal Ullah (LAB)**

Tel: 07956 124264  
 Email: abdal.ullah@towerhamlets.gov.uk  
 @Abdalullah

**ST PETER'S**



**Kevin Joseph Brady (LAB)**

Tel: 07943 159386  
 Email: kevin.brady@towerhamlets.gov.uk  
 @Kevin\_J\_Brady



**Tarik Ahmed Khan (LAB)**

Tel: 07950 414218  
 Email: tarik.khan@towerhamlets.gov.uk  
 @Tarikahmedkhan



**Gabriela Salva Macallan (LAB)**

Tel: 07528 807599  
 Email: gabriela.salva-macallan@towerhamlets.gov.uk

**STEPNEY GREEN**



**Sabina Akhtar (LAB)\***

Tel: 07961 792965  
 Email: sabina.akhtar@towerhamlets.gov.uk  
 @SabinaAkhtar



**Motin Uz-Zaman\* (LAB)**

Tel: 07961 390709  
 Email: motin.uz-zaman@towerhamlets.gov.uk  
 @MotinZ

**WEAVERS**



**Abdul Chunu Mukit MBE (LAB)**

Tel: 07985 124248  
 Email: abdulc.mukit@towerhamlets.gov.uk



**Kabir Ahmed (ASPIRE)**

Tel: 07572 609549  
 Email: kabir.ahmed2@towerhamlets.gov.uk

**WHITECHAPEL**



**Faroque Mahfuz Ahmed (LAB)**

Tel: 07956 972328  
 Email: faroque.ahmed@towerhamlets.gov.uk



**Shah Suhel Ameen (LAB)**

Tel: 07930 364985  
 Email: shah.ameen@towerhamlets.gov.uk  
 @shahsuhelameen



**Victoria Ngozi Obaze (LAB)**

Tel: 07405 661609  
 Email: victoria.obaze@towerhamlets.gov.uk  
 @victoria\_obaze

## Competition: Win tickets!

Tickets to Canary Wharf Ice Rink and Genesis Cinema in Mile End are up for grabs this December.

For your chance to win, all you need to do is follow Tower Hamlets Council on Twitter and Instagram on 10 and 17 December for more information and details on how to enter – and keep your copy of Our East End to hand!

Follow @towerhamletsnow



Tickets for the Canary Wharf Ice Rink are among the prizes up for grabs

## Budget update

A consultation seeking the views of residents on how the council sets its budget closed on Monday 15 November.

Feedback from that consultation is now being collated and will be presented to Cabinet in December, before budget proposals are brought forward in February 2022.

Full council is then expected to make a decision on the budget for 2022/23 on Wednesday 2 March 2022.

# Advertise in Our East End

Delivered four times a year to every household in the borough.

That's **340,900** residents in **135,900** households, along with 366 bulk distribution points across (E14, E1, E2, E3, E1W).



For rates and upcoming publication dates please email [communications@towerhamlets.gov.uk](mailto:communications@towerhamlets.gov.uk)

## Meetings

### Children & Education Scrutiny Sub-Committee

Wednesday 8 December, 6.30pm

### Overview & Scrutiny Committee

Monday 13 December, 6.30pm

### Inner North East London Joint Health Overview and Scrutiny Committee

Tuesday 14 December, 6.30pm

### Cabinet

Wednesday 15 December, 5.30pm

### Health & Adults Scrutiny Sub-Committee

Thursday 16 December, 6.30pm

### Licensing Sub-Committee

Thursday 16 December, 6.30pm

### Cabinet

Wednesday 05 January 2022, 5.30pm

### Development Committee

Thursday 6 January 2022, 6.30pm

### Overview & Scrutiny Committee

Monday 10 January 2022, 6.30pm

### Licensing Sub-Committee

Tuesday 11 January 2022, 6.30pm

### Grants Determination Sub-Committee

Wednesday 12 January 2022, 5.30pm

### Strategic Development Committee

Wednesday 12 January 2022, 6.30pm

### General Purposes Committee

Tuesday 18 January 2022, 6.30pm

### Council

Wednesday 19 January 2022, 7pm

### Licensing Sub-Committee

Tuesday 25 January 2022, 6.30pm

### Cabinet

Wednesday 26 January 2022, 5.30pm

### Tower Hamlets Health & Wellbeing Board

Tuesday 1 February 2022, 5pm

### Overview & Scrutiny Committee

Monday 21 February 2022, 6.30pm

### Cabinet

Wednesday 23 February 2022, 5.30pm

### Children & Education Scrutiny Sub-Committee

Monday 28 February 2022, 6.30pm

### Council

Wednesday 2 March 2022, 7pm

Meetings take place at the Town Hall, Mulberry Place, 5 Clove Crescent, E14, unless otherwise stated. Dates and times may change. Agendas are available online. For more information on meetings visit [www.towerhamlets.gov.uk/meetings](http://www.towerhamlets.gov.uk/meetings)



[/towerhamletscouncil](https://www.facebook.com/towerhamletscouncil)



[@towerhamletsnow](https://twitter.com/towerhamletsnow)



[www.towerhamlets.gov.uk/signup](http://www.towerhamlets.gov.uk/signup)

## USEFUL INFORMATION SERVICES AND CONTACTS

### Advice

#### Account 3 (welfare and debt advice)

3 Birkbeck Street, E2.  
020 7739 7720  
www.account3.org.uk

#### Age UK East London

82 Russia Lane, E2.  
Caxton Hall, Caxton  
Grove, E3.  
Royal London Hospital  
14F Wards.  
info@ageukeastlondon.  
org.uk  
www.ageuk.org.uk/  
eastlondon  
020 8981 7124

#### Bromley by Bow Centre

St Leonard's Street, E3.  
020 8709 9700

#### Carers Centre Tower Hamlets

21 Brayford Square, E1  
OSG  
enquiries@ccth.org.uk  
www.ccth.org.uk  
020 7790 1765

#### Citizens Advice Bureau

32 Greatorex Street, E1.  
020 7247 1050  
towerhamlets@eastend-  
cab.org.uk  
www.eastendcab.org.uk

#### Island Advice Centre

Island House, Roserton  
Street, Isle of Dogs, E14.  
020 7987 9379  
www.island-advice.org.uk

#### Legal Advice Centre

University House,  
104 Roman Road, E2.  
020 8980 4205  
www.legaladvicecentre.  
london

#### Limehouse Project

789 Commercial Road,  
Unit 2, St Anne Street, E14.  
020 7538 0075  
www.limehouseproject.  
org.uk

#### Praxis (New Residents) Immigration, benefits and general advice

Pott Street, E2.  
General Helpline:  
020 7729 7985  
Immigration advice:  
020 7749 7608  
www.praxis.org.uk

#### Tower Hamlets Community Advice Network

thcan@island-advice.org.  
uk  
www.thcan.org.uk

#### Tower Hamlets Law Centre

Unit 1, St Anne's Street,  
E14. 020 7538 4909  
www.thlc.co.uk

### Careers

#### Adult education services

Shadwell Centre,  
455 The Highway, E1.  
020 7364 5665

#### WorkPath

Employment and Skills  
Centre, 55 Upper Bank  
Street, E14. 020 7364 3727  
workpath@towerhamlets.  
gov.uk

#### Young WorkPath/Tower Hamlets Careers Service

40-42 Watney Market, E1.  
020 7364 1401  
youngworkpath@  
towerhamlets.gov.uk

### Council

#### Town Hall

Mulberry Place,  
5 Clove Crescent, E14 2BG.  
www.towerhamlets.gov.uk  
General enquiries  
020 7364 5000

### Debt

#### Fair Money Advice

18 Ashwin Street, E8.  
020 3475 8811  
www.fairfinance.org.uk

#### Island Advice Centre

Island House, Roserton  
Street Isle of Dogs, E14.  
020 7987 9379  
www.island-advice.org.uk

#### Toynbee Hall Advice Service

28 Commercial Street, E1.  
020 7392 2953  
advice@toynbeehall.org.  
uk  
www.toynbeehall.org.uk

### Health & wellbeing

#### Alzheimer's Society

Robinson Centre, Mile  
End Hospital, Bancroft  
Road, E1.  
020 8121 5626

#### BYM Bangladesh Youth Movement Women's Centre of Excellence

Whitechapel Centre, Units  
1 & 2, Myrdle Street, E1.  
020 7377 8668  
www.bym.org.uk

#### Covid vaccine helpline

Tower Hamlets Council  
has launched a Covid-19  
vaccine helpline, on  
020 7464 3030, to support  
residents who are eligible  
for vaccination to book  
their appointment.

#### East London Parkinson's Support Group

hello@parkinsons.org.uk  
0808 800 0303

#### Free home fire safety advice

08000 284428

#### Health hotline

020 7364 5016

#### Healthwatch Tower Hamlets

Mile End Hospital, Ban-  
croft Road, E1.  
0800 145 5343  
info@healthwatchtower  
hamlets.co.uk  
www.healthwatchtower  
hamlets.co.uk

#### LinkAge Plus

Toynbee Hall, Commercial  
Street, E1.  
020 7392 2913

#### Reset

Tower Hamlets Drug and  
Alcohol Service  
183 Whitechapel Road, E1.  
020 3889 9510  
reset.towerhamlets@  
cgl.org.uk

#### Safe East (under-19s)

compass.towerhamlets  
yphws@nhs.net  
020 3954 0091

#### Stop Smoking services

www.quitrightth.org  
020 7882 8230

#### Tower Hamlets

Advocacy Real  
020 7001 2170  
hello@real.org.uk

### Housing

#### Choice-based lettings

020 7364 2826

#### Homeless service

020 7364 7474  
Out of hours  
020 7364 4079

#### Homeseekers

www.thhs.org.uk

#### Housing advice

020 7364 3558

#### Repairs

0800 376 1637 ext 1

#### Tower Hamlets Homes

020 7364 5015

### Idea Stores and libraries

#### Bow

Gladstone Place, E3.

#### Canary Wharf

Churchill Place, E14.

#### Chrisp Street

Vesey Path, E14.

#### Whitechapel

321 Whitechapel Road, E1.

#### Local History Library and Archives

277, Bancroft Road, E1  
localhistory@towerham-  
lets.gov.uk  
Visit www.ideastore.  
co.uk/home

### Leisure centres

#### John Orwell Sports Centre

Tench Street, Wapping, E1.  
020 7488 9421

#### Mile End Park Leisure

Centre and Stadium  
190 Burdett Road, E3.  
020 8709 4420

#### Poplar Baths

170 East India Dock Road,  
E14. 020 3795 0599

#### St George's Leisure Centre

221 The Highway, Wap-  
ping E1. 020 7709 9714

#### Tiller Leisure Centre

Tiller Road, Isle of Dogs  
E14. 020 7987 5211

#### Whitechapel Sports Centre

55 Durward Street, E1.  
020 7247 7538

#### York Hall Leisure Centre

5-15 Old Ford Road, E2.  
020 8980 2243

For the latest information  
and updates, including  
details of opening hours or  
temporary closures, visit  
[www.towerhamlets.gov.uk](http://www.towerhamlets.gov.uk)  
or [www.better.org.uk](http://www.better.org.uk)

### Parent & child

#### Family Information Service

30 Greatorex Street, E1.  
fis@towerhamlets.gov.uk  
020 7364 6495

#### Multi-Agency Safeguarding Hub (MASH)

If a child is at risk of harm:  
020 7364 5006 (option  
3, open Mon to Fri, 9am -  
5pm)  
020 7364 4079 (out of  
hours emergency duty  
team)

#### Tower Hamlets National Childbirth Trust

0300 330 0700  
www.nct.org.uk

### Report it

#### Anti-fraud (housing and tenancy related fraud)

0800 528 0294

#### Black Women's Health and Family Support

020 8980 3503

#### Childline

0800 1111

#### Domestic Violence Team

0800 279 5434

#### Environmental

#### Protection (Noise) Team

020 7364 5000

#### Haven Whitechapel (sexual assault referral centre)

020 3299 6900 /  
020 3299 1599

#### Karma Nirvana (honour-based abuse helpline)

0800 5999 247

#### Men's Advice Helpline

0808 8010 327

#### National LGBT domestic abuse helpline (Galop)

0800 999 5428 /  
0300 999 5428

#### Non-emergency crimes 101 Textphone

18001 101

#### NSPCC Child Protection Helpline

0800 800 5000

#### Respect (for perpetrators)

0808 802 4040

#### Rights of Women

020 7251 6577

#### Samaritans

116 123

#### Shelter

0808 800 4444

#### Tower Hamlets Mediation Service (free service for council tenants and leaseholders)

020 7364 7474

#### Victim Support Tower Hamlets

0808 168 9291 /  
0808 168 9111

### Sign-up to Tower Hamlets news

Find out what's on,  
get Tower Hamlets  
news, take part in  
competitions and  
receive local offers  
straight into your  
inbox!

Visit [www.towerhamlets.gov.uk/signup](http://www.towerhamlets.gov.uk/signup)

# Landlords... Continued guaranteed rent throughout the pandemic

*Rent your Property today!*

- ✓ Hassle-free letting
- ✓ Free certificates
- ✓ Families waiting



WE URGENTLY REQUIRE PROPERTIES ACROSS LONDON & ESSEX AREAS



**elliotleigh** 020 8983 4444

Visit our website for more information [www.elliotleigh.com](http://www.elliotleigh.com)