

What Regeneration will deliver

Community Consultation Events,
September 2019

- **Best quality and well-designed homes**
- **Affordable homes for residents on the housing waiting list**
- **Safer streets through good design and improved lighting**
- **New, usable secure open spaces**



- Significant increase in the number of generally affordable homes
- New housing that will meet resident's housing needs
- Provide a truly mixed, cohesive and sustainable community



- Every new home will be provided with its own private outdoor space
- Sensible and appropriate tree planting strategy
- Planting to increase bio-diversity
- Quality secure communal open spaces for the entire community to use



- Design to connect estate to exiting context and environment
- Homes and open spaces designed to be inclusive for all



- Warm, bright homes will promote health and well being
- Constriction to go beyond current legislation requirements to reduce noise annoyance
- Improved energy efficiencies will reduce energy bills



Wornington Green, Royal Borough of Kensington and Chelsea



Orchard Village, Rainham



Campbell Place, Fleet

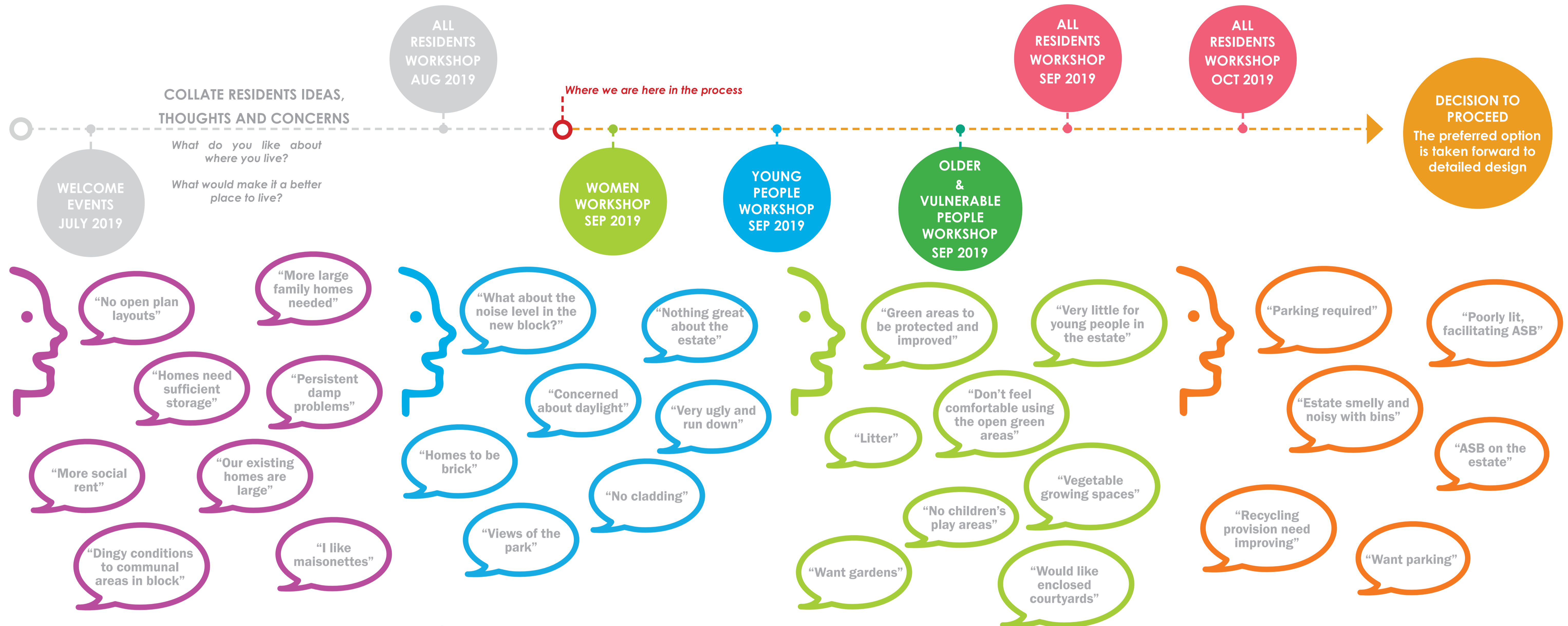


Myatts Field, Oval Quarter



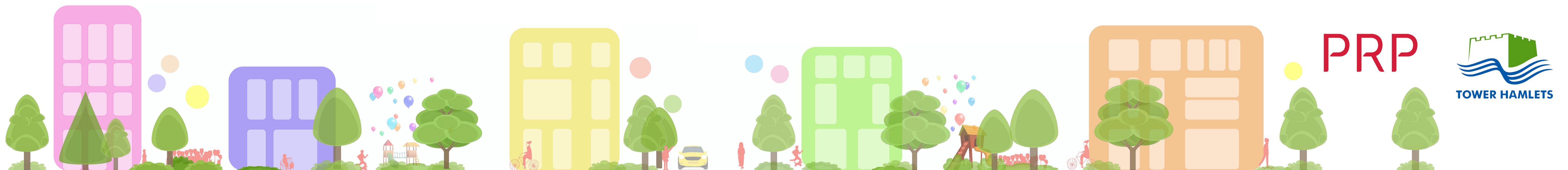
What you have told us so far about your estate.

Community Consultation Events,
September 2019



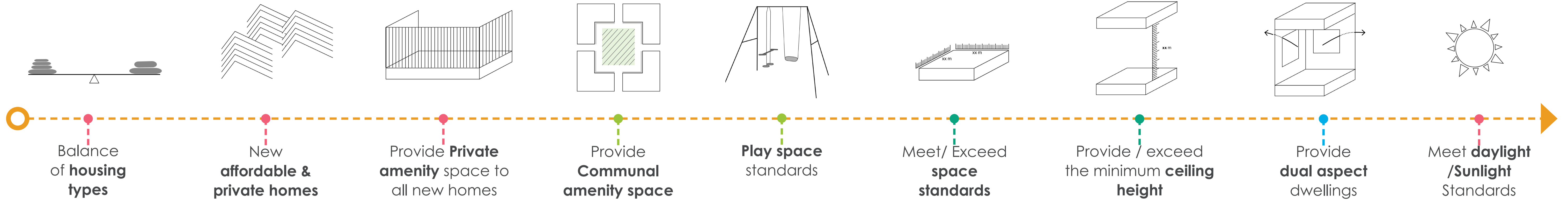
What we can confirm...

- All homes will have their own private outdoor amenity space, sized according to occupancy
- All homes will have at least the national standard requirement for usable storage
- Family units with 3 or more bedrooms will have separate kitchen
- Daylight within new homes will be to the guidance set by the British Research Establishment (BRE) as those to provide quality living environments
- Open spaces will be secure courtyards
- 10% of all homes provided will be designed to be wheelchair accessible homes, and to the requirements of Tower Hamlets lead Occupational Officer
- Storage capacity for waste (including recycling) will be designed to new standards, eliminating bins on the street
- We will liaise with the Metropolitan Police's Design Out Crime Officer to ensure our proposals, through good design, promote a safe place to live
- Construction will exceed national standards in terms of energy efficiency and noise nuisance.



Design

Community Consultation Events,
September 2019



HOME

ARCHITECTURE

OPEN SPACE

STREETS



Design Standards



Open Plan | Separate kitchen



Typologies



Natural Light



Inclusivity



Materials



Windows



Juliet Balconies



Detailed design



Balconies



Variety of materials



Wild Flowers



Kids Play



Exercise equipment



Allotments | community gardens



Park | Space to run



Bins and bikes



Wide pavement | Front gardens



Well lit , safer streets



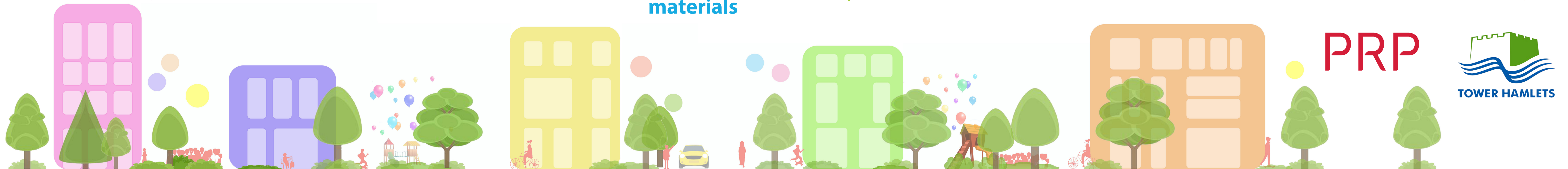
Parking



Places to sit



Places to play



PRP

